

DIGIMIC DCen ConfigTool

Control software for DIGIMIC central units

Article no.: S4.1350

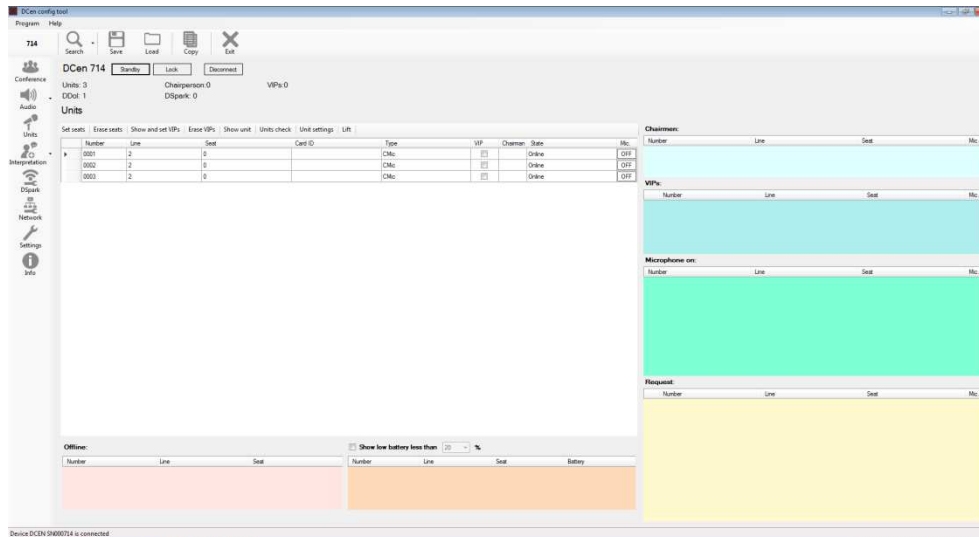


Table of contents

Table of contents	2
About this manual	5
Symbols	5
General notes	5
Important information	5
Safety instructions	5
Safety information	6
DIGIMIC Digital Conference System	6
System requirements	7
System components	7
Installation	7
Download.....	7
Operation	8
Program	9
Help	10
Configuration	11
Select DCen.....	11
Standby	12
Lock.....	12
Disconnect	13
Identify	13
Save.....	13
Load.....	14
Copy	15
Exit.....	15
Menu	16
Conference	17
Microphone mode	17
Number of open delegate and VIP units	18
Override button on the chairman's desk.....	18
Priority	19
Push to Talk	19
Loudspeaker volume	20
Audio.....	21

Audio Setting.....	21
Advanced audio settings	23
Audio Matrix.....	27
Default	28
Chairperson.....	28
OR + 4 CH	28
Σ Mic + 4 CH	29
Matrix 1 to 8	29
FoC (Floor on Channels)	30
Vox and Noise	31
Units	32
Set seats	35
Automatic	35
Manual	36
Erase seats.....	36
Show and set VIPs	37
Erase VIPs	37
Show unit	38
Units check.....	38
Unit settings.....	40
Lift	40
Interpretation	41
Language channels.....	41
Interpretation Units	43
DSpark	47
CSX4.....	47
Network	48
Settings.....	49
Info.....	50
DCen mini.....	50
Conference	50
Audio.....	51
Appendix	52
Default factory settings	52
Troubleshooting.....	53
List of ISO 639-2 language codes	54

About this guide

Keep these operating instructions.

Symbols

The following means of representation are used in this manual:



Indicates instructions which, if not followed, may endanger your health, the functionality of your use or the security of your data.



Indicates additional information and tips.

Tex

Texts in bold font and/or underlined texts are texts or terms that should be emphasized.

General notes



Read this manual carefully and attentively. Pay particular attention to the instructions marked with the symbols listed above.



The warranty is void if software errors are caused by improper use.



DIGIMIC is a user-friendly and reliable conference system - Nevertheless, it is recommended to use Brähler Systems for planning, installation and commissioning.

Important information

Safety instructions

- Read this manual!
- Keep the manual in a safe place
- Observe the specified warnings
- Follow the instructions
- Do not use the required hardware near water
- Clean the required hardware only with a dry, clean cloth
- Install the software only according to the instructions in this manual
- Do not operate the required hardware near any heat sources such as radiators, stoves, or other apparatus (for example, amplifiers) that produce heat
- Only use attachments and accessories that are suitable according to the manufacturer.

- Unplug the required hardware during lightning storms or when the hardware is not in use for long periods of time.
- Have all maintenance work performed by qualified personnel. Servicing is required when the required hardware has been damaged in any way, such as power cords or plugs have been damaged, the unit has been dropped, exposed to moisture, or is not operating properly.

Safety information

Warning.



The required hardware components are live devices - read the operating instructions for each device in detail and follow the specified safety instructions to avoid fire, electric shock or other hazards.

Do not open any devices! Potentially dangerous voltages are present inside. Leave all maintenance work to qualified personnel.

The DIGIMIC Conference System is state-of-the-art and has been developed in accordance with all applicable regulations. Nevertheless, the individual components of the system can lead to danger for persons, material assets and data if:

- the system is not used as intended,
- the system is not set up by personnel who are familiar with the safety regulations,
- the system is improperly converted or modified,
- the safety instructions are not observed.

Disposal



This symbol on the product, instructions for use or packaging means that electrical and electronic equipment should be disposed of separately from household waste at the end of its working life. There are collection systems for recycling within the EU or countries outside the EU. For more information, please contact the local authorities or your dealer where you purchased the product.

If devices are to be scrapped, remove all components such as batteries, housings, circuit boards and cables. Dispose of all individual components in accordance with local waste disposal regulations.

DIGIMIC Digital Conference System

Thank you for choosing the DIGIMIC conference system. You have invested in future-proof conference technology.

DIGIMIC meets the requirements of studio technology and thus goes far beyond the actual standard of conference technology. The system can be linked to the PC and can thus be controlled via software. Various functions can be realized via the TCP/IP interface, such as microphone control, name management and voting.

The individual microphone units of the CMic series as well as the DDol interpreter console are almost self-explanatory in their operation. Delegates and interpreters can thus concentrate on the real thing - the conversation.

Use the DCen ConfigTool software to configure the DIGIMIC central processing units. All settings are automatically transferred to the connected DIGIMIC units. Separate configuration of each individual unit is not necessary.

System requirements

Hardware

- DCen MkII (or DCen) or DCen mini MkII (or DCen mini)
- Standard Windows PC

Software

- Microsoft Windows 10, 32- or 64-bit edition
- Microsoft .NET Framework 4.6.1 (or newer / will be installed if required)

System components

- CMic/CChair
- CMic ID/CChair ID
- CMic One / CChair One
- CMic VIS versions (audio support for the visually impaired)
- DLine
- DSwitch
- DExt
- Brähler microphones (TMD/01; TM58/6; etc.)
- System accessories (cables etc.)



For more information on the individual system components of the DIGIMIC family and their operation, please read the corresponding operating instructions.

Installation

Before you start installing the software, carefully read the license agreement (it was given to you when you purchased this software).



If you have already installed an older DCen ConfigTool version, it must be uninstalled first.



To perform the installation of the software, you need administrator rights!

Download

Unpack the compressed file into any directory. From this directory, start the SETUP.EXE file by double-clicking on it. Follow the instructions.



An installation help - a so-called Setup Wizard - guides you through the further steps:

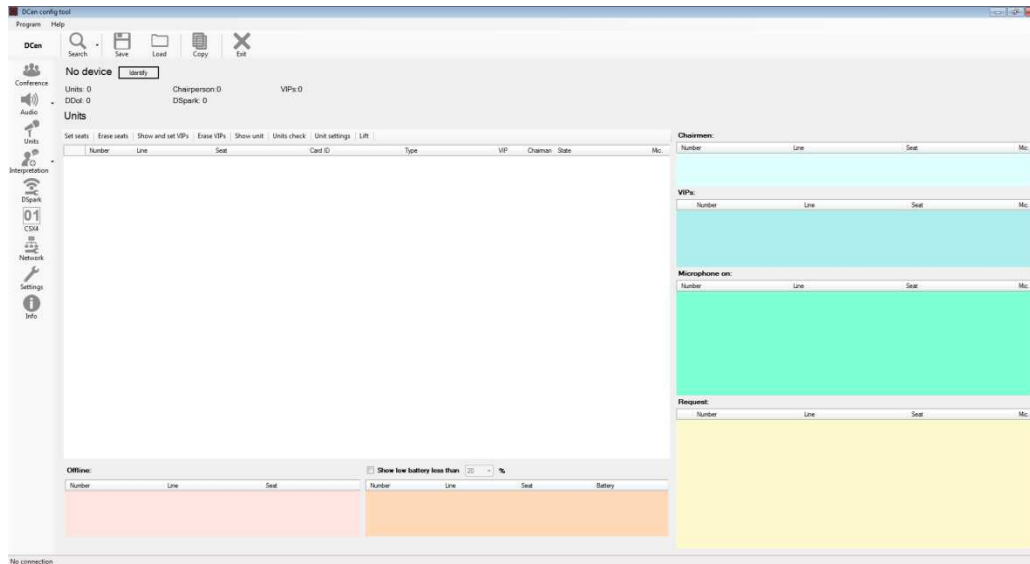


The note during the installation of "Install DCen ConfigTool for yourself or for anyone who uses this computer" refers to using the program for all users (Everyone) or only the currently logged in user (Just me).

Operation



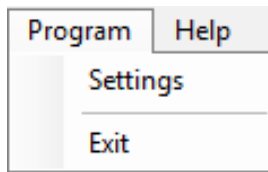
Open the program on your computer. The following window will open:



The DCen ConfigTool always starts with the "Units" window. Information on the structure, settings and operation of the Units window can be found from page 32 of this manual.

Instruction manual

Program

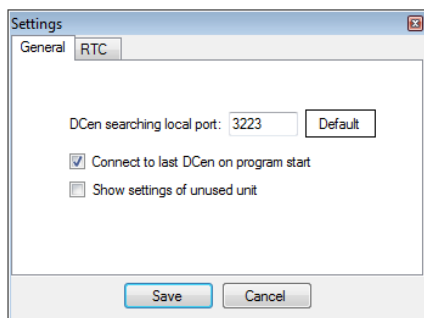


By clicking the "Program" button, you will be shown various options:

- Settings
- Exit

Settings

Click on "Settings" - the following window will open:

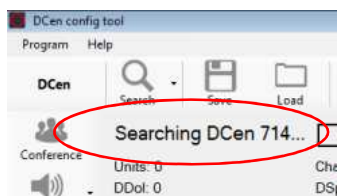


In the "General" tab you have the following options:

DCen searching local Port: enter the port number so that the program can search for the DCen connected in your network. By clicking the "Default" button, the default number 3223 will be used.



Note that not more than one program (for example MicControl, BrählerOS, DCen ConfigTool) can access the same DCen from one computer at the same time via the same port address. If necessary, change the port number in the DCen ConfigTool to 3224, 3225, etc.



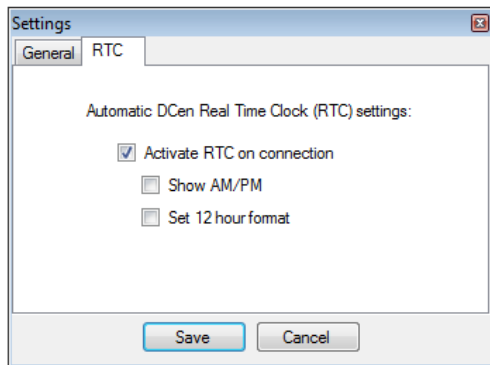
Connect to last DCen on program start: At the next program start, the software automatically searches for the last DCen used and connects to it. A check mark symbolizes the activated state.

State	Mic.
Online	OFF
Offline	OFF
Offline	OFF
Offline	OFF
Offline	OFF
Offline	OFF
Offline	OFF
Offline	OFF
Offline	OFF

Show settings of unused unit: The DCen saves all registered units. If the "Show settings of unused unit" function is activated, they are displayed even if they are currently no longer connected to the DCen. They are displayed "offline". If the units are installed in the system again at a later time, they are switched "online" again.

Instruction manual

RTC



Click on the "RTC" tab to go to the next page.

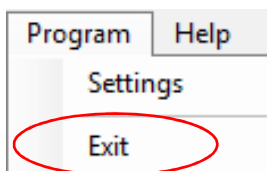
The DCen itself does not have a built-in clock - it therefore uses the clock (RTC - Real Time Clock) of your computer and transmits this time to the connected interpreter consoles, for example. Check "Activate RTC on connection", the program will then automatically adopt the RTC of your computer every time it is switched on.

You also have the choice of whether you want to display the clock in AM/PM or 12-hour format. Set the

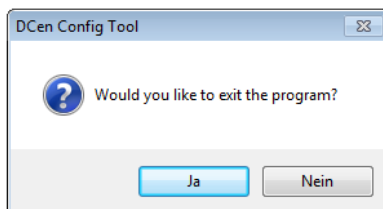
corresponding check mark for this.

Use the "Save" button to save your entries, and "Cancel" to close the window without saving your entries.

Exit

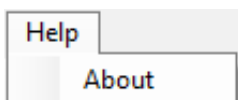


Click on "Program" and then on "Exit" to close the DCen ConfigTool program. DCen automatically saves all settings and applies them the next time it is switched on.

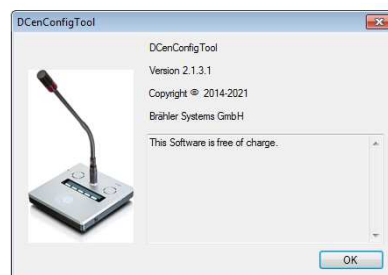


To prevent accidental closing of the program, a window with a security prompt will open. Confirm the operation to close the program. By negating the window closes and the DCen ConfigTool continues to work.

Help



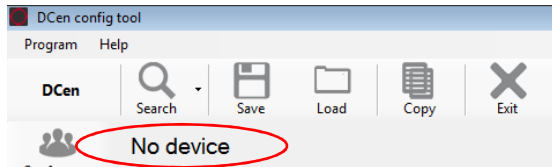
Click on "Help" in the upper tab - the "About" option will be displayed. By clicking the "About" button you will get information about your program - for example, which versions you are currently using.



Click "OK" to close the info window.

Configuration

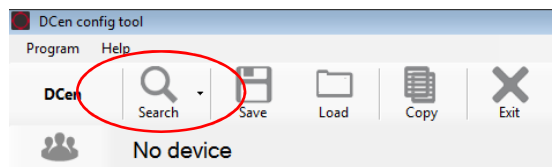
Select DCen



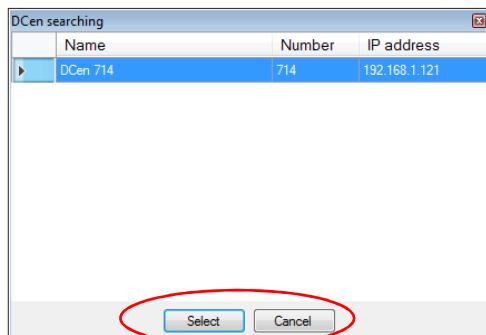
The DCen ConfigTool first shows you that no DCen is selected "No device".



If the "Connect to last DCen on program start" function is activated, the program automatically connects to the last DCen - this is displayed accordingly. (See page 9 of this manual).

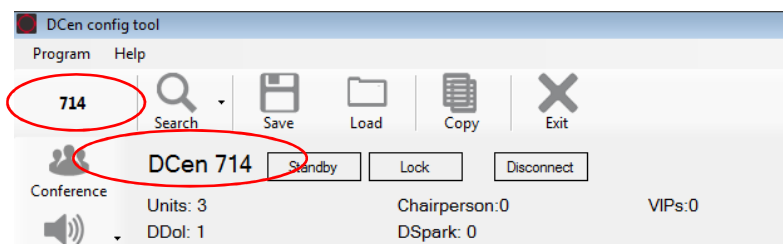


To link a DCen to the software, click the "Search" button.



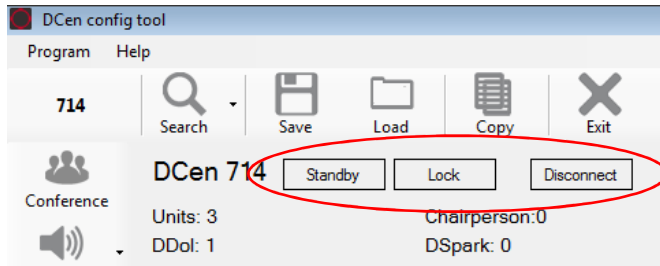
In the window that opens, all DCens that are in the network are listed. Select the desired DCen by clicking on it. Then save your settings by clicking the "Select" button.

Click "Cancel" to close the window without saving your entries.



The selected DCen and the connected units are then displayed on each page of the DCen ConfigTool.

Instruction manual



If you have selected a DCen, further functions are enabled: Standby, Lock and Disconnect.

Standby

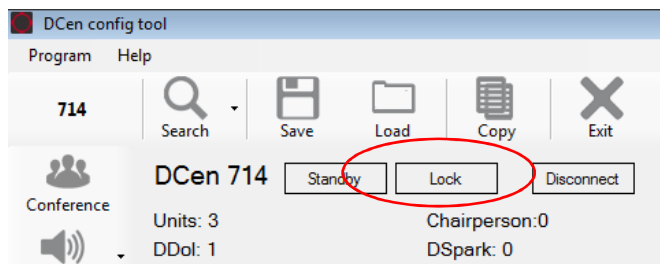


Click on "Standby" to switch the DCen to standby mode, for example during conference breaks. The standby mode is indicated by a red lettering. To end the standby mode, click on "Activate". Alternatively, the system can be activated by pressing the microphone button on a chairman unit.



The displays of the microphone units darken. Likewise, the display of older DCen models darkens. The DCen cannot be operated manually via the control panel in standby mode. Read the DCen operating instructions to exit standby mode manually.

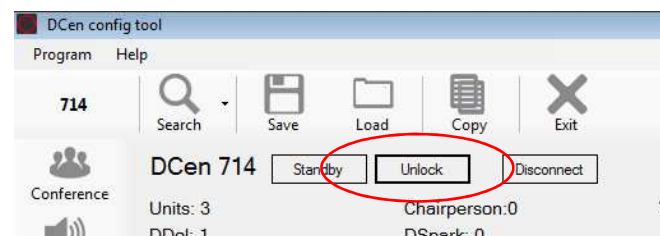
Lock



To protect the DCs from unintentional adjustment, lock them. To do this, click on the "Lock" button. The DCen is locked and can no longer be operated by pressing keys or clicking individual buttons.



The Lock function is intended exclusively for older DCen models. Starting with the DCen MkII model, the function is omitted.



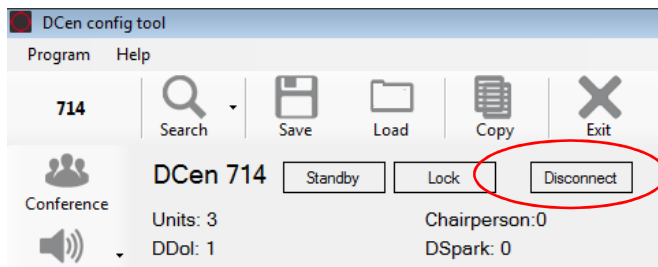
To unlock the DCen, click on the "Unlock" button. The DCen can be operated again.



To unlock the DCen manually, please read the corresponding chapter of the DCen operating instructions.

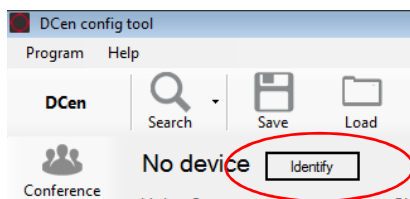
Instruction manual

Disconnect

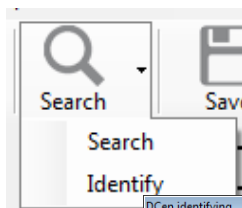


To disconnect the DCen from the software, click on "Disconnect".

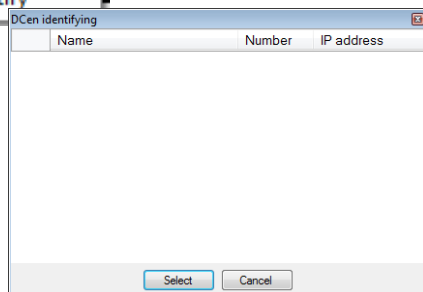
Identify



The function "Identify" helps you to identify the selected DCen in an installation of several DCens. Click on the button "Identify", the corresponding DCen will be identified by the oscillation of the green power LED.



This "Identify" function helps you with newer DCen models (from DCen MkII) to find a specific DCen out of a batch for the software. Click on "Identify" under "Search" and the following window will open. In this window you can read the name, the number and the IP address of the existing DCens.



Press the "Reset to DHCP" button on the back of the DCen MkII. The corresponding DCen will be displayed in the window.

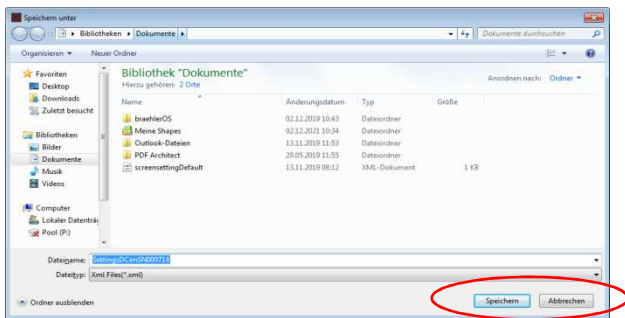


The "Identify" function via the "Reset to DHCP" button is possible from the DCen MkII model. Older DCen models do not include this function.

Save



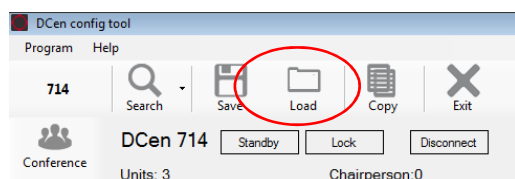
To save your DCen settings locally on your computer, click on "Save" in the upper toolbar. The following window will open.



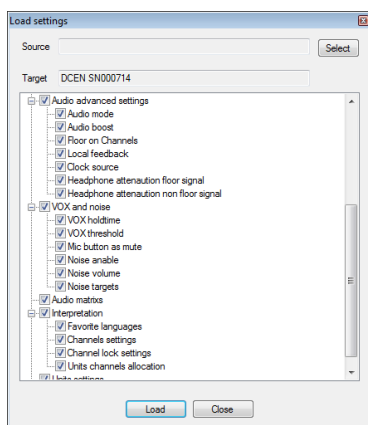
Give your document a unique name (e.g. name, location and date of your conference). Then click "Save" to create your document.

Press "Cancel" to end the process without saving your entries.

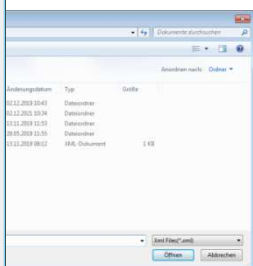
Load



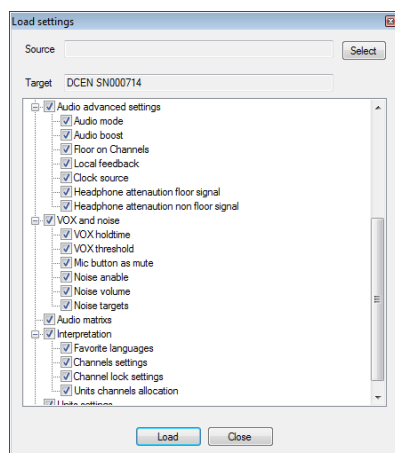
You have the option to load saved content. To do this, click on "Load" in the menu bar. The following window opens.



Click on "Select", the file window of your computer will open. Select the desired file here and click "open".



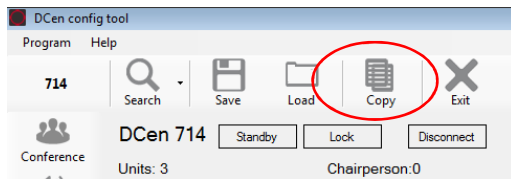
Select which of the DC configurations you want to transfer from the file. The configurations marked with a check mark are applied. Then click on "Load" to apply the selected settings.



When downloading files to ConfigTool, all functions are initially selected. You must manually turn off options (uncheck them), otherwise all options will be selected, downloaded and other settings will be overwritten.

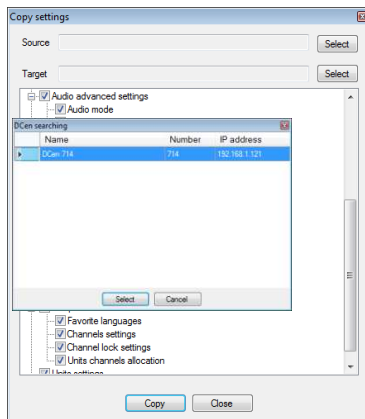
Instruction manual

Copy



You have the possibility to transfer all your settings to another DC. To do this, click on "Copy" in the upper menu bar.

The following window opens



Under "Source", enter your output DCs, i.e. the DCs from which you want to copy the settings.

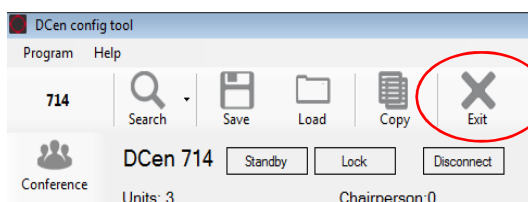
Click on "Select" and select the corresponding DCs in the window that opens. Proceed in the same way under "Target" - here you select the DCs to which you want to copy the settings. Confirm your selection with "Select" and close the window with "Cancel".

In the "Copy settings" window, select which options you want to transfer. A check mark symbolizes the selected state. Click on "Copy" to transfer your selection. Click on "Close" to end the process without transferring the data.

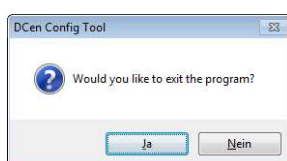


When transferring files, all functions are initially selected. You must manually turn off options (uncheck them), otherwise all options will be selected, transferred and settings will be overwritten.

Exit



To close the DCen ConfigTool program, click on "Exit" in the upper toolbar. The following window appears.



Confirm the security question to close the program. With "No" you close the window, the program remains open.

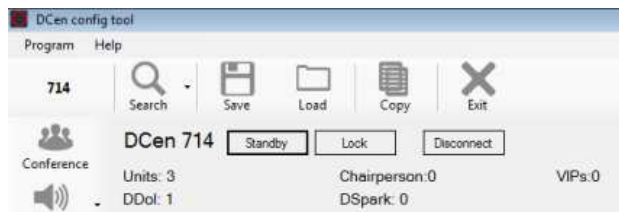
Menu



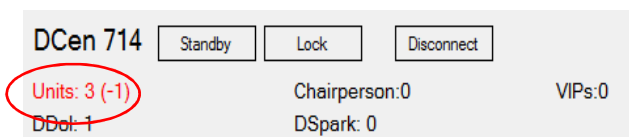
Use the menu bar (left edge of the screen) to make all settings for your conference. The menu is divided into the following items:

- Conference
- Audio
- Units
- Interpretation
- DSpark (discontinued/only for older models, from model DCen MkII onwards this menu item is omitted)
- CSX4 (only for 32-channel models, for older 8-channel models and DCen mini models this option is omitted)
- Network
- Settings
- Info

The following pages explain the various menu items and their operation.

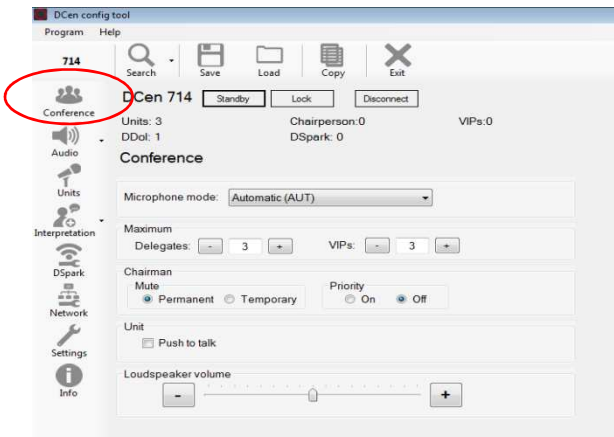


In each menu item you will see the name of the selected DCs and information about the connected devices (Units, DDols, Chairpersons, DSparks and VIPs).



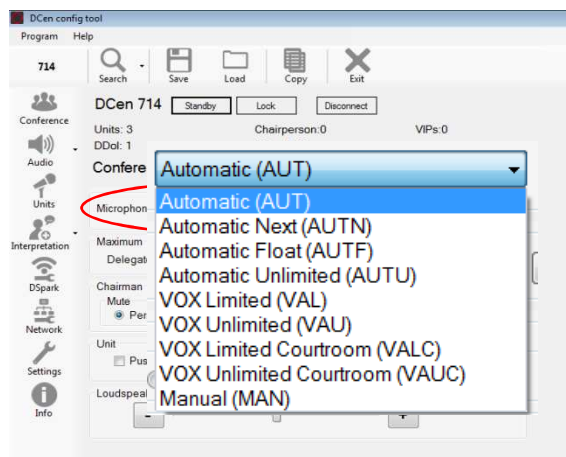
If units are lost unexpectedly, you will always see this above the editing window as well.

Conference



Under "Conference" you make general settings such as microphone mode, priorities and number of simultaneously activated microphones.

Microphone mode



Open the drop-down list under "Microphone mode". The possible microphone modes are displayed. Select the desired mode by clicking on it.

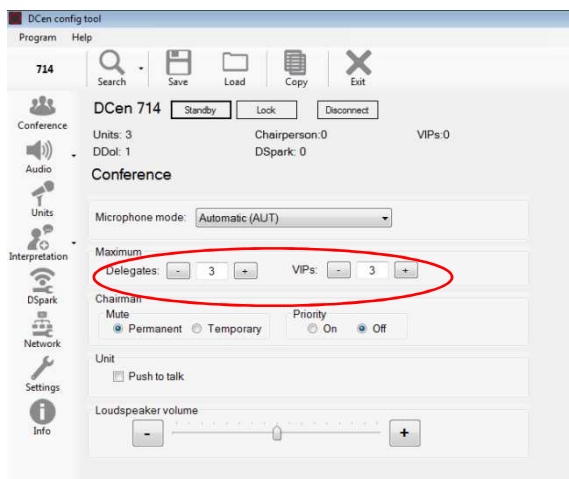
You can choose from the following variants:

- AUT** AUTomatic means that by default, depending on the setting, up to 6 delegate units can be active simultaneously. Further requests or switch-on attempts are rejected. The participants can switch their microphones on and off at any time.
- AUTN** AUTNext means that when the number of open microphones is reached, the next participant is automatically released as soon as an active participant switches off. The microphone key flashes to indicate that the participant has made a word request and is in wait mode. As soon as an active speaker switches off, the next waiting microphone is automatically switched on.
- AUTF** AUTFloat means that the first speaker is replaced by the last one as soon as the maximum number of speakers is reached (FIFO - First In First Out).
By default, several participants can be active simultaneously up to a set limit. When this limit is reached, the participant whose unit was switched on first is switched off.
- AUTU** AUTU (automatic unlimited) means that an unlimited number of delegate units can be active at the same time. Delegate and VIP units are not assigned in this case. The participants can switch their microphones on and off at any time.

Instruction manual

- VAL VAL means that the system is in voice-controlled mode and the number of simultaneously active units is limited.
- VAU VAU means that the system is in voice-controlled mode, the number of simultaneously active units is unlimited.
- VALC VALC behaves similarly to VAL - but with the difference that a chairman unit can use the override button to briefly stop the voice activation of all microphones, e.g. to prevent the transmission or recording of intermediate remarks (off the records).
- VAUC VAUC behaves similarly to VAU - but with the difference that a chairman unit can use the override button to briefly disable voice activation of all microphones, e.g. to prevent the transmission or recording of intermediate remarks (off the records).
- MAN MAN cannot be set via the central unit, but only via a media control, the DCen ConfigTool or the MicControl software. Chairmen and VIPs can switch on their microphones at any time - delegates, on the other hand, can only register a request to speak. The corresponding microphone is then manually activated via software or media control. By pressing the microphone button again, delegates can withdraw their speaking request at any time. If software is terminated or the media control is unplugged, the DCen immediately returns to AUTU mode.

Number of open delegate and VIP units



The number of simultaneously open microphone units is limited. By default, the number of open units is a maximum of three delegate units and three VIP units each. Click on "+" or "-" to change the number of open microphones. Each click increases or decreases the number.

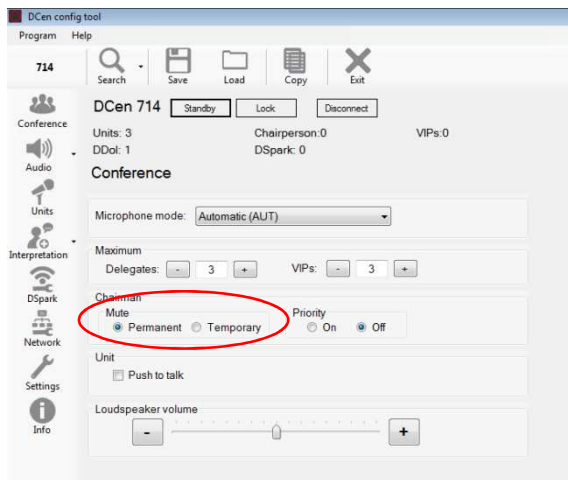


In the "unlimited" discussion modes, the display of the maximum open units is hidden. Any number of microphones can be switched on simultaneously. Please note an increased risk for acoustic feedback.

Override button on the chairman's desk

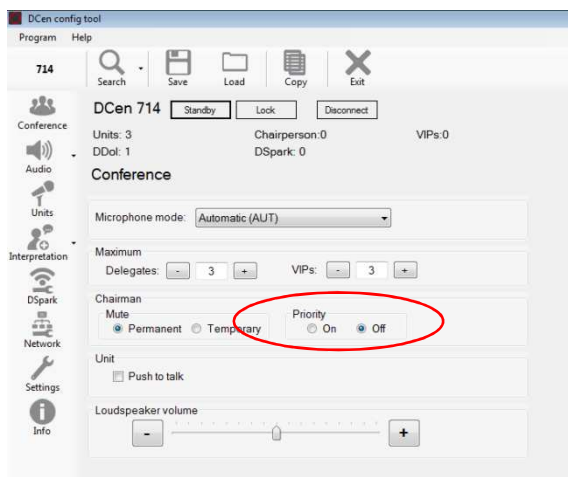
All chairman units have an "override" button. This can be used to mute delegate units. There are two override variants: temporary and permanent. Temporary means that the delegate units are muted as long as the "override" button on the chairman unit is pressed. When this is released, the delegate microphones are open again. Permanent means that the delegate units are muted by pressing a button. The microphones must be switched on again.

Instruction manual



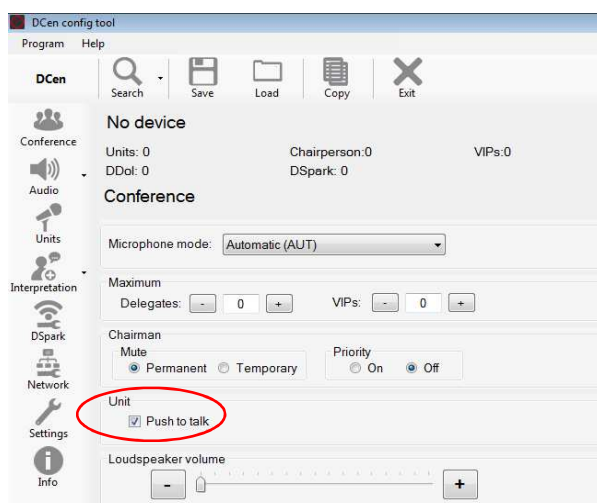
You can switch between the two variants by activating the corresponding variant under Chairman. To do this, click on the desired variant. The blue dot means active.

Priority



The DGen automatically detects whether Chairman units are present in the system. Depending on the setting, the chairman versions are assigned special priority. If "Priority" is switched off, the chairman desk is treated as a normal microphone and can be switched on at any time in addition to active delegate microphones. If "Priority" is switched on, all switched-on delegate units are switched off as soon as a chairman desk is switched on. You select the setting by clicking on it. The blue dot indicates whether the priority is on or off.

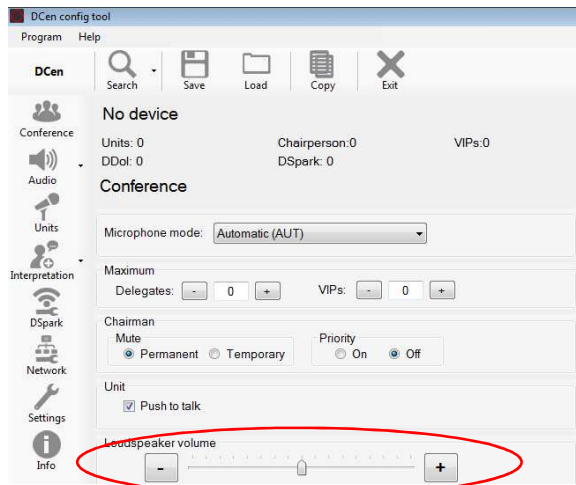
Push to Talk



When the "Push to Talk" function is activated, the microphones in the non-VOX modes switch on by pressing and switch off again as soon as the button is released. (The switch-on behavior depends on the set discussion parameters - for example, how many open microphones are possible).

To activate the "Push to Talk" function, check the box under "Unit". If the function is switched on, this is indicated by a check mark.

Loudspeaker volume



In the bottom line, you set the volume for playback on the built-in speakers. You can change the volume either by clicking on "+" (louder) and "-" (softer) or by clicking on the level arrow, holding it and moving it along the scale.

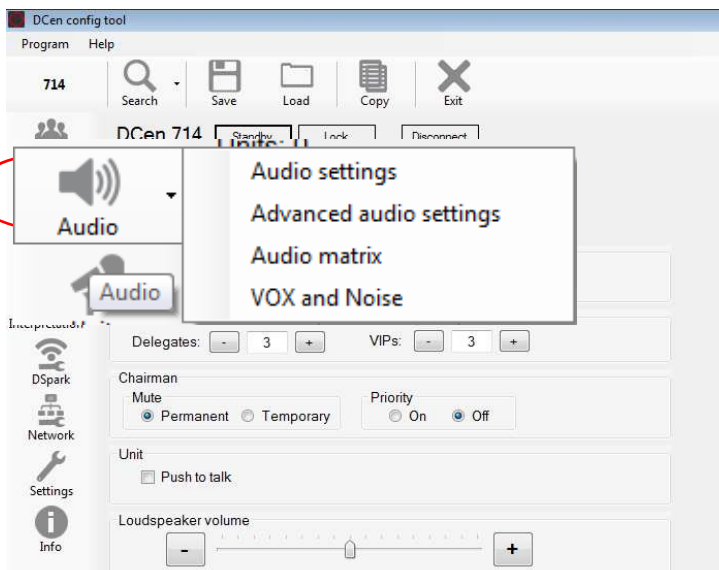
Instruction manual

Audio

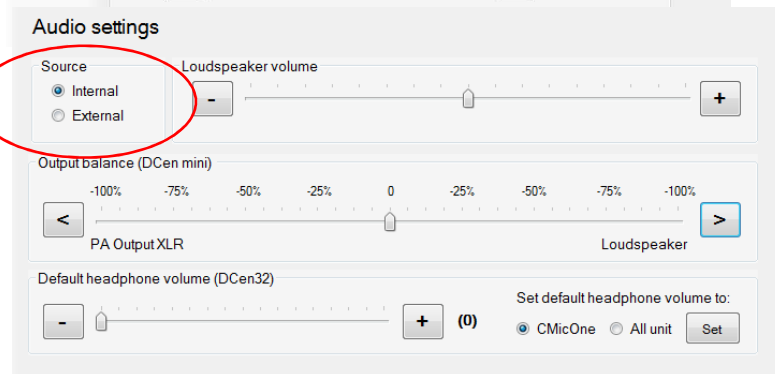
In the menu item "Audio" you make all audio settings.

Click on the "Audio" menu item - a drop-down list with the following options will open:

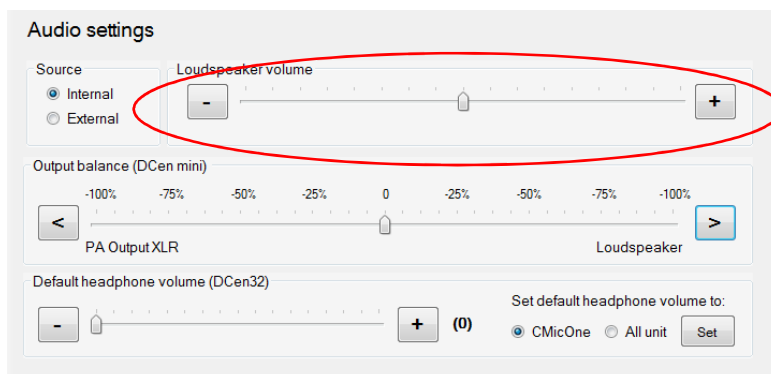
Select the desired option by clicking on it.



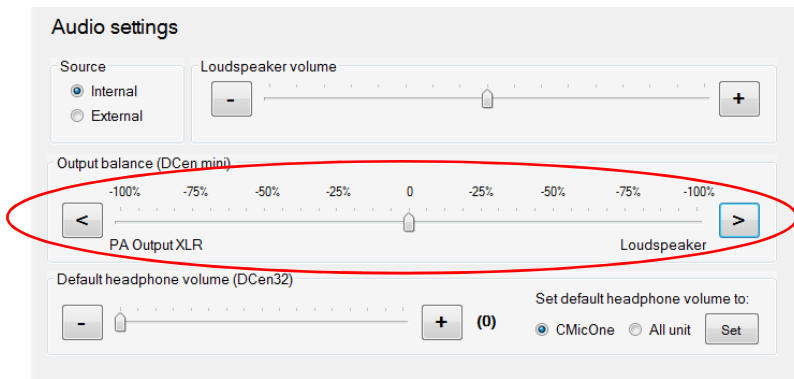
Audio Setting



At "Source" you set the audio source. With the "Internal" setting, the microphone units are used as the audio source for the speakers and the original channel (Floor). With the "External" setting, only an externally fed audio signal is used for the speakers and the original channel (floor).



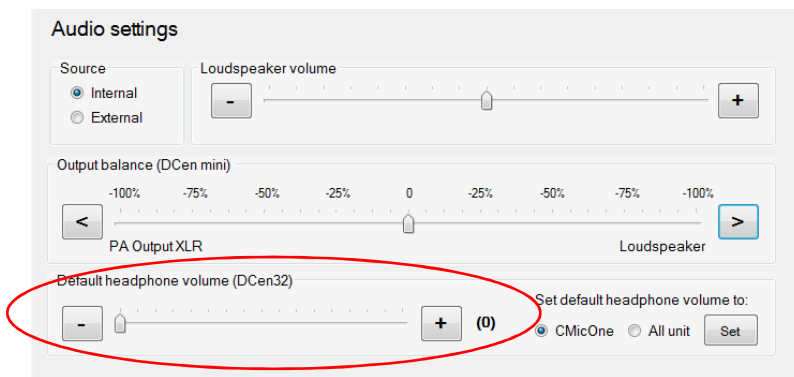
Use the "Loudspeaker volume" slider to set the volume of the built-in loudspeakers. Clicking the "-" button will decrease the volume, clicking "+" will increase the volume. Alternatively, you can change the volume by clicking, holding and moving the level arrow.



Under "Output balance" you set the ratio between the speaker output and the PA output. Click on the buttons to move the level to the desired position. Alternatively, the level can be adjusted by clicking, holding and moving.



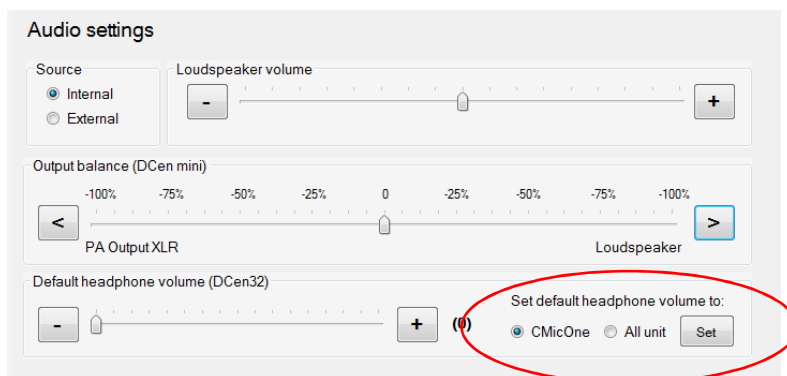
The "Output balance" function is only required for operating the DCen mini.



Use "Default headphone volume" to set the default volume of the connected headphones. Click on the buttons to move the level to the desired position. Alternatively, the level can be adjusted by clicking, holding and moving.



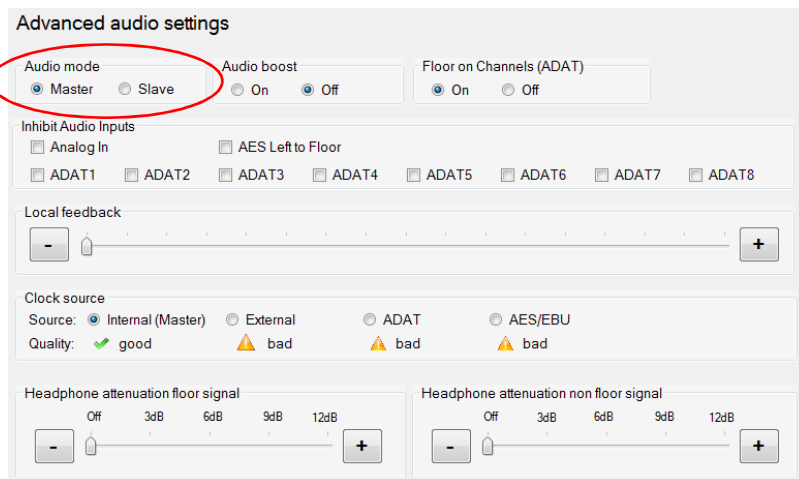
The "Default headphone volume" function is only available with DCen MkII and DCen32.



Use "Set default headphone volume to:" to specify which units the volume control should apply to: CMic One units only or all units integrated in the system.

Click the desired option and then click "Set". The selection is applied.

Advanced audio settings



Under "Audio mode" you set the master or slave mode. Click on the desired option. A blue dot indicates the selected function.



The slave mode is a variant of the EXT mode, with which several control panels can be connected. Make sure that under "Source" external is set (see page Fehler! Textmarke nicht definiert. of this manual).

At a central station - the master - the interpreting takes place via DDol. The microphone signals are collected via DANTE and forwarded to the slave central stations, channel selectors and loudspeakers. At the master center the Floor-On-Channels option for DANTE should be activated (see page 30 Audio Matrix of this manual). At the slave central stations Floor-On-Channels is only possible according to the setting of the master central station. The DANTE output of the last slave central unit can be passed on to other targets such as an infrared transmitter.



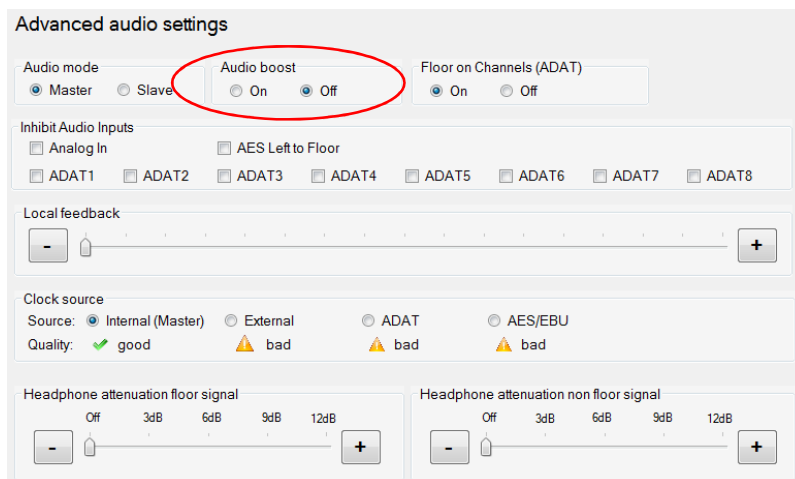
The audio slave mode is only an audio connection. The logical connection between the individual Dcen units must be made, for example, by an external control via software.



DANTE must always be set as the clock source for the slave central stations.



Older Dcen models can also be connected via ADAT.



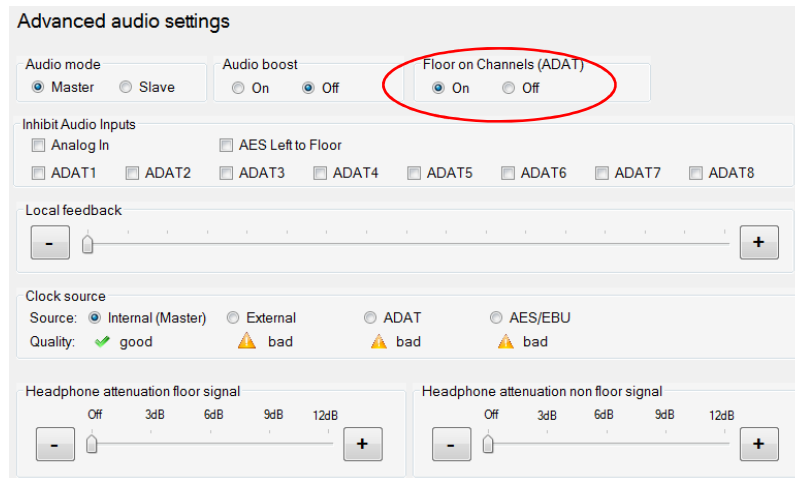
Under "Audio boost" you set whether an amplification of the audio signals should take place or not. Click "On" to amplify the signals - with "Off" you switch off the amplification of the audio signal.

The blue dot signals the selected state.



The "Audio boost" setting is only necessary for some old consoles of the DMic series - for consoles of the CMic series this function must never be switched on. If you are unsure whether your DMic requires the "Audio boost" function, please ask your dealer.

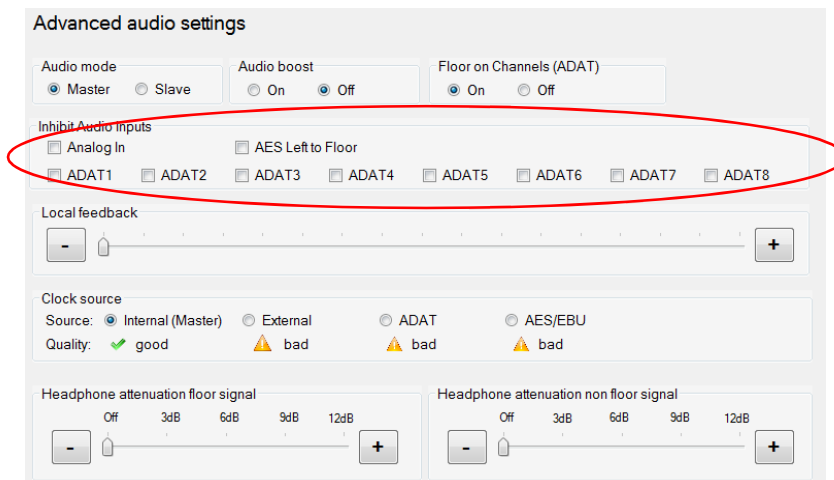
Floor on Channels



If ADAT or DANTE outputs are not occupied by an active interpreter, you can assign the original sound (floor) to them. This function is important, for example, when signals are delivered to a voice distribution (infrared). For other distribution purposes (like media) a floor on an unused interpreter channel is not desirable. You can therefore switch corresponding channels separately and independently in the audio matrix.

You set the "Floor on Channels" function via the "On" and "Off" options. Click the desired option - a blue dot shows the selected function.

Inhibit Audio Inputs



In "External" mode, several audio signals are usually mixed on top of each other to obtain floor and language channels. In some cases, however, this is undesirable - for example, if the analog sources contain background noise. The "Inhibit Audio Inputs" menu therefore offers the option of suppressing certain audio signals.

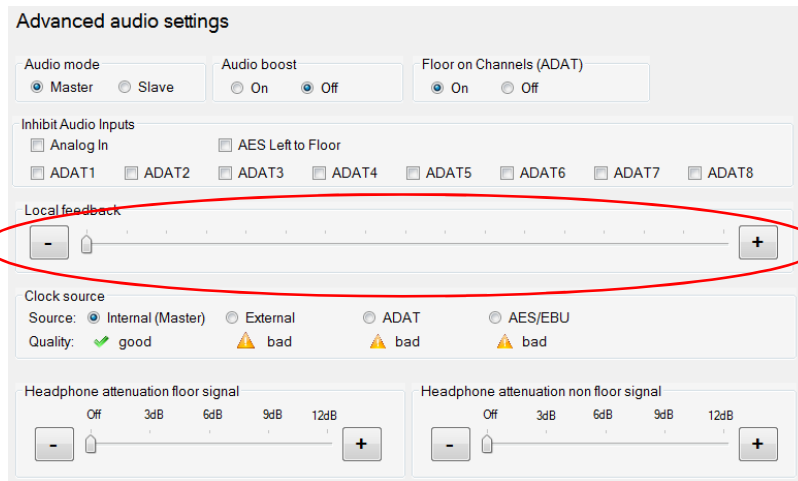
Click the "Analog In" or "AES Left to Floor" box to suppress certain signals. A check mark indicates that signals in this area are switched off.

You can determine which channels are switched off using the ADAT 1 to ADAT 8 buttons. By clicking on the desired channel, you prevent the floor signal or the language channels 1-7 from being mixed up. - Set a corresponding check mark at the channels to be suppressed.



Activations are indicated by check marks.

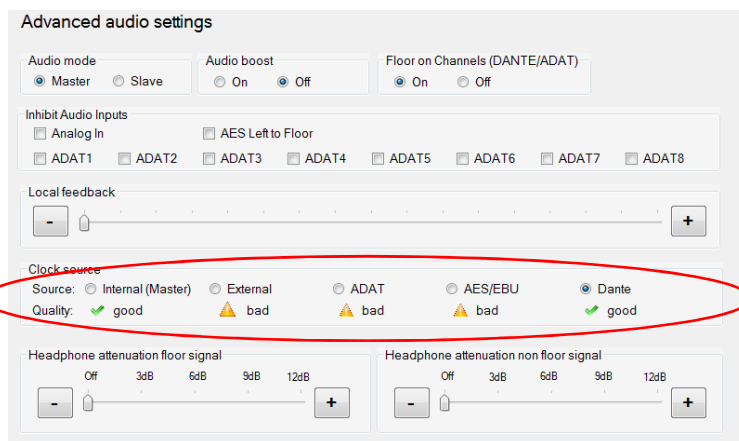
This function is omitted in newer DCens (from DCen MkII).



To be able to hear the own microphone signal additionally on the built-in loudspeakers in case of external feed, adjust the local microphone feedback up. The level of the local feedback is set using the "+" and "-" keys.



Setting the microphone feedback is important, among other things, if delegate units are to be connected to the master DC in addition to interpreter units in a master/slave circuit. In this case, it is recommended to set the local microphone feedback to maximum. It is also recommended to set the local feedback when using video conference systems.



Under "Clock source" you control the word clock source. Select the desired source by clicking on it. If the clock source fails or is outside the specified limits, the DCen continues to operate with its internal MasterClock.



The selected clock is automatically used as clock for the outgoing ADAT and AES/EBU connections as well.

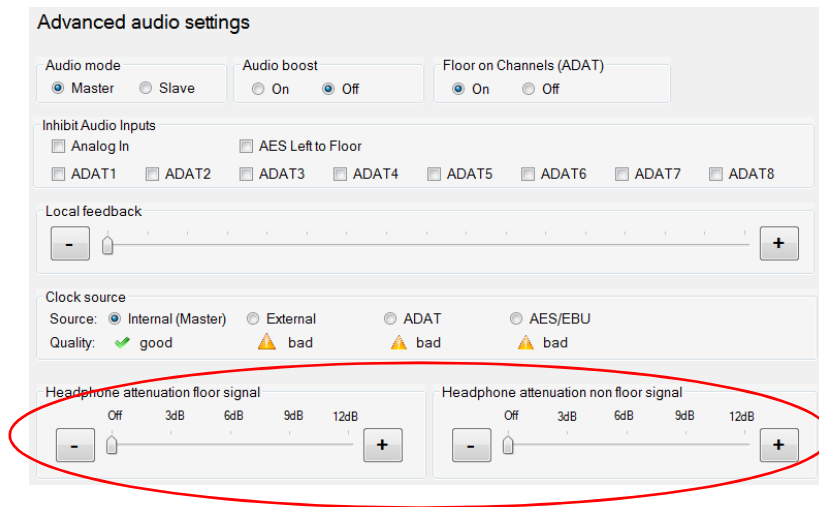
- Master the DCen generates the 48kHz clock itself
- External the clock is taken from the "Wordclock in" connector (DCen32 only)
- ADAT the clock is taken from an input ADAT signal (DCen 32 only)
- AES/EBU Clock is taken over from an input AES/EBU signal (DCen 32 only)
- DANTE Clock is taken from the DANTE board



When using the DANTE interface, DANTE **must be** selected as the clock.



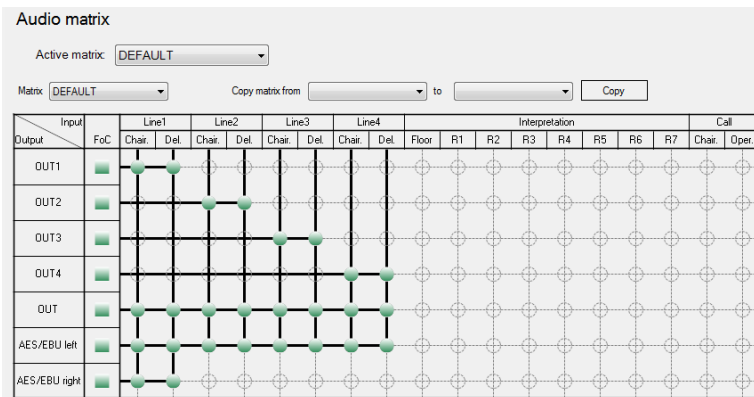
Starting with the DCen model DCen MkII, the ADAT and AES/EBU interfaces are no longer available.



To avoid audio feedback, the headphone signal of the active delegate units can be attenuated. The attenuation of the headphone signal with the microphone open can be set in four levels. A distinction is made between floor channels (original and non-translated language channels/left control) and other channels (interpreter active/right control).

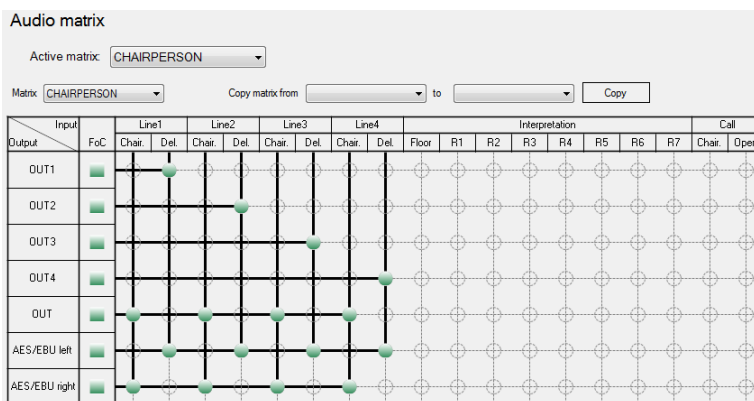
Click and hold the respective level, you can now move the level to the desired position. Alternatively, click on "+" or "-" to set the desired attenuation. You go cyclically through the possible settings: 0dB (off) - 3dB - 6dB - 9dB - 12dB

Default



Default" describes a normal conference situation. The signals of the microphone units of the corresponding line arrive at Line OUT 1-4. The sum of all lines is output on the Line OUT and AES/EBU outputs (left). On the second AES/EBU output (right) the microphone signals of line 1 as "podium".

Chairperson



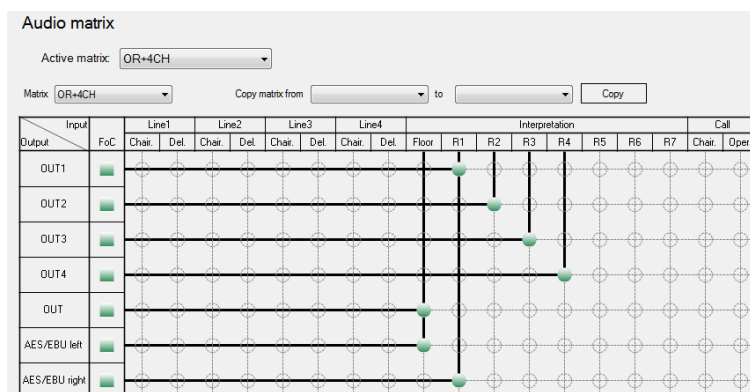
The "Chairperson" audio routing is intended for conferences where the audio signals of the presidential units must be handled separately.



Separate routing is not mandatory for presidential desks - theoretically, it is possible to include any unit in the group of separately treated units.

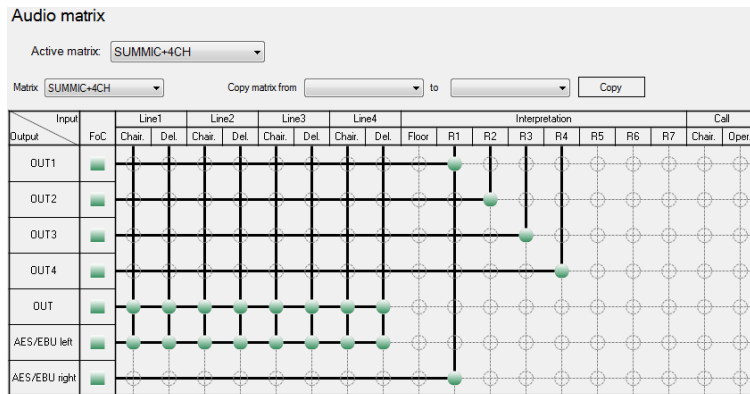
On LINE OUT 1-4 and AES/EBU (left) the microphone signals of the "normal" delegates of the respective line arrive - on LINE OUT and AES/EBU (right) the sum of the presidential units.

OR + 4 CH



OR + 4 CH" is defined as the third table for multilingual conferences. Here, the analog and digital outputs are used for the output of the language channels. The channel "Original" is assigned with "Sum Mic+External Source" for external routing.

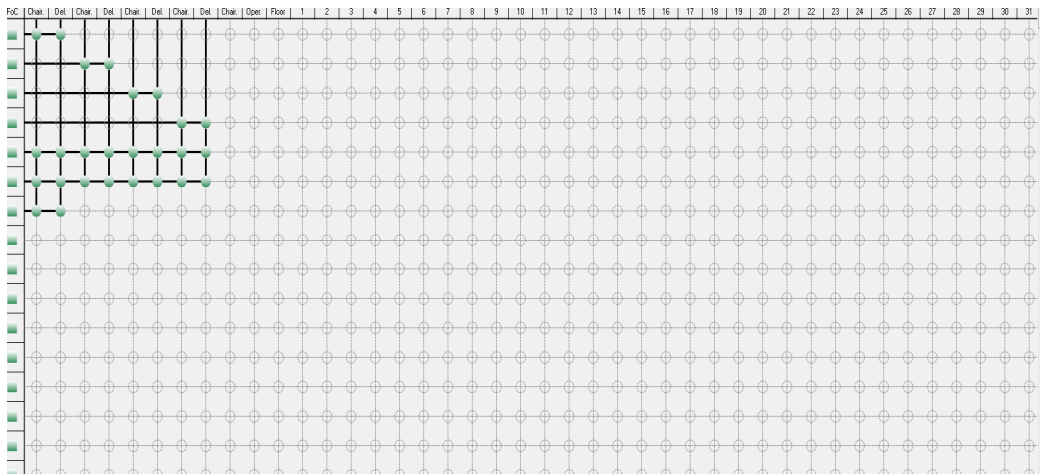
Σ Mic + 4 CH



The fourth table is "Σ Mic + 4 CH". This table is structured like OR + 4 CH, but in this case the original channel is only occupied by the sum of the microphone units and not by an external source.

Matrix 1 to 8

In the matrices 1 to 8 you define yourself which input signals are to be bundled on which outputs.



In principle, you have the option of selecting from different groups. The line channels include the input channels of the delegate units (Line 1 to Line 4) and the input channels of the chairman units (Line 1 to Line 4).

In the Language Channel group, 32 channels (original/floor and 31 language channels) are available.

In the "Call Channels" group, the input channels Call Chair(man) and Oper(ator) are available. Here you can select whether the current output channel is available for intercom functions of the interpreters. If the selection is activated and an interpreter presses the call or chair key, these have priority over the buzzes of other signals - i.e. if an interpreter presses one of the two keys, only his microphone signal comes out of the output channel.



As long as the Call Chairman and Call Operator channels are not routed to any output channel, the "Chair" and "Call" functions are not available on the interpreter console.

In the Output section you have 32 channels (D34 to D56), where channels 34 to 38 are assigned to the outputs Out or Out1 to Out4.



To make a combination click on the corresponding circle in the window. A green dot and the connection lines show you the connection. Another click cancels the connection.

Example: In this example, the signals of lines one and two have been bundled to output OUT1. Lines 3 and 4 go to output OUT2. The floor channel goes out via AES/EBU left, channels R1 to R4 via OUT4 and channels R1 to R7 via OUT3 and AES/EBU right.

FoC (Floor on Channels)

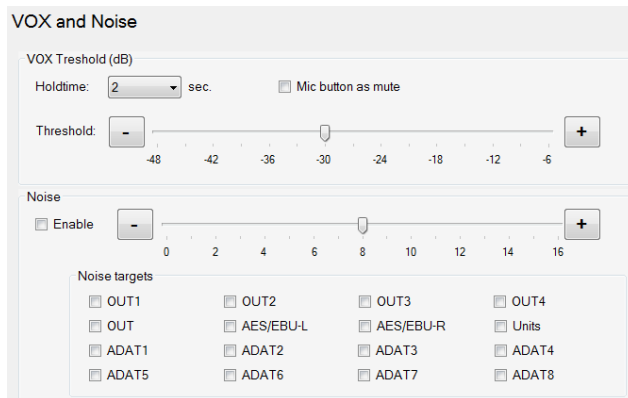


With the option "Floor on Channels" you determine whether the original sound (floor) is transmitted on an interpreter channel if no interpreter is active on this channel. You switch the function on or off by clicking on the box in the "FoC" bar. If the box is gray, the function is disabled. A green box symbolizes the activated state.



For more information on Floor on Channels (ADAT), please refer to the page 24 of this manual.

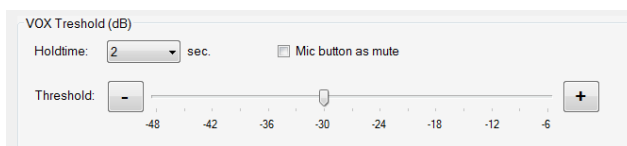
Vox and Noise



In the "Vox and Noise" menu, the settings for the "Voice Activation" microphone modes are set.



The settings are exclusively for the VOX conference modes (VAL, VAU, VALC and VAUC).

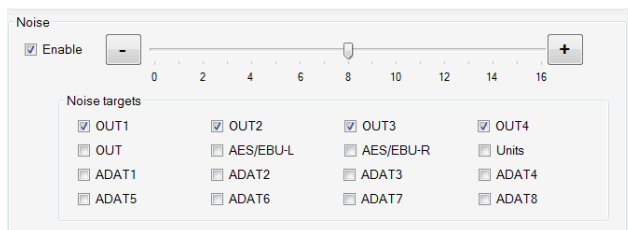


In the upper part of the menu window you make VOX settings.

Holdtime: Set how long the microphone's hold time is - that is, how long the microphone should remain on when it is no longer being addressed.

Mic button as mute: Each conference participant has the option to mute his microphone via the microphone button when activated. You activate the function by placing a check mark next to "Mic button as mute". To deactivate, remove the checkmark by clicking on it.

Threshold: Use the "Threshold" tab to set the sensitivity of the microphone, i.e. the speech volume at which the microphone switches itself on. Press, hold and move the tab to the left or right to adjust the sensitivity. Alternatively, click the "+" or "-" button.



In the lower part of the menu window you make the "Noise" settings.

Enable: To switch the noise function on or off, click the "Enable" box. A check mark symbolizes the activated state.

If the "Noise" function is activated and VALC or VAUC is set as the discussion modes, the chairperson can not only mute the microphone units, but also apply a noise to predefined audio outputs in parallel. This is intended to make a whispered conversation harder to listen to.

You adjust the volume of the noise via the Noise level. Click, hold and slide the level arrow to the left (-) or right (+) - the noise will become quieter or louder accordingly. Alternatively, click the "-" or "+" button.

Noise targets: Under "Noise targets" you define for which outputs the noise function is activated/deactivated. To do this, click on the box in front of the respective output. A check mark indicates which output is assigned a noise.

Instruction manual

Out1 to Out4: Specify which of the four analog Line Outs/DANTE outputs 35 to 38 should receive noise.

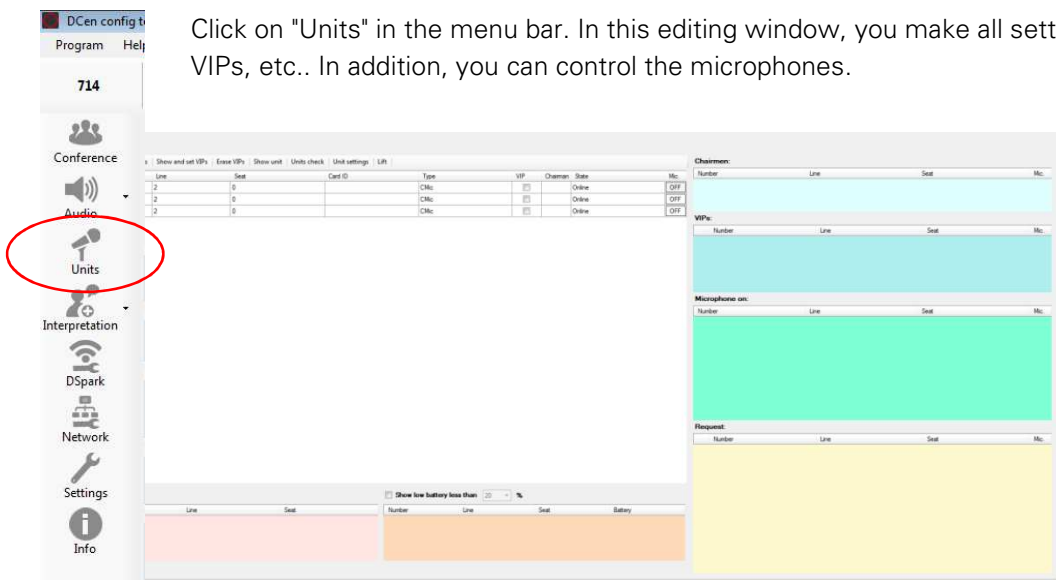
Out: Line Out (DANTE channel 34) denotes the analog sum output

AES/EBU L/R: The left/right channel of the AES/EBU output (DANTE channel 40/39) is assigned with noise

Units: Units denotes the loudspeakers in the consoles

ADAT1 to ADAT8: The ADAT channels 1 to 8 are assigned a noise. Analog to this the corresponding DANTE channels.

Units



Click on "Units" in the menu bar. In this editing window, you make all settings for seats, VIPs, etc.. In addition, you can control the microphones.

In the upper left part of the window you will see all the connected units and the related information.

Number	Line	Seat	Card ID	Type	VIP	Chairman	State	Mic.
0001	2	0		CMic	<input type="checkbox"/>		Online	OFF
0002	2	0		CMic	<input type="checkbox"/>		Online	OFF
0003	2	0		CMic	<input type="checkbox"/>		Online	OFF

Number: Indicates the position of the unit within the chain

Line: Indicates to which output the chain is connected

Seat: Indicates the seat number of the unit

Card ID: If an RFID card is used for identification, the card number of the subscriber is displayed in this field.

Type: Indicates what type of unit it is.

Instruction manual

VIP
<input checked="" type="checkbox"/>
<input type="checkbox"/>
<input type="checkbox"/>

VIP: Within the table you define under "VIP" which units should get a VIP status. Click the corresponding box in the table. The unit will be treated as a VIP. By clicking again, the VIP status is canceled. (A check mark symbolizes the status activated as VIP).

VIPs:				
Number	Line	Seat		Mic
<input checked="" type="checkbox"/> 0001	2	1		<input type="button" value="OFF"/>

If a VIP is present, it is listed in the VIP list (right-hand area of the screen). Use the Mic button to switch the unit's microphone on or off. Use the "X" to remove the VIP status from the unit.

Chairman	Sta
<input checked="" type="checkbox"/>	Onlin
<input type="checkbox"/>	Onlin

Chairman: If this is a chairman unit, this is indicated accordingly.

Chairmen:				
Number	Line	Seat		Mic
0001	1	1		<input type="button" value="OFF"/>

If Chairman units are present, they will automatically be listed in the Chairmen list (right-hand side of the screen). Use the Mic button to switch the microphone of the unit

on or off.

State
Online
Online
Offline

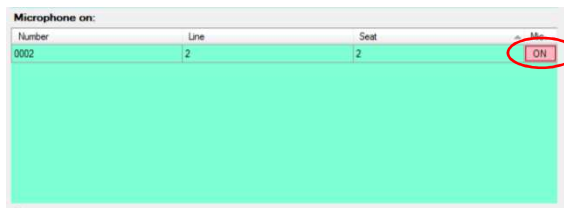
Status: Indicates the status of the units. If a unit is "lost", this is automatically indicated by "Offline".

Offline:			
Number	Line	Seat	
0003	2	3	

In addition, the corresponding unit is listed in the "Offline" list in the lower area (left) of the window. This gives you a quick overview should units go offline unexpectedly.



Via the column "Mic." column, you have the option of switching the participants' microphones on or off. Click the corresponding button - switched off microphones are switched on, switched on microphones are switched off accordingly. Depending on the conference modes, units will enter the "Request to Speak" area (see below). They have to wait until another microphone is closed.



When the microphone is switched on, the units are automatically listed in the "Microphone on" list (all units, including VIP and Chairman) (right area of the screen). If the microphone is switched off, the unit is removed from the list. Using the Mic button, the microphone can be turned off.



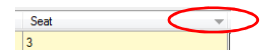
Depending on the conference modes, delegates have to make a request to speak - if they turn on their microphone, they first move to the "Request" list. If a microphone slot becomes free, the first one in the request list automatically slides into the "Microphone on" list. Via the "Req." button (Mic column) and the "X" the unit can be deleted from

the request list.

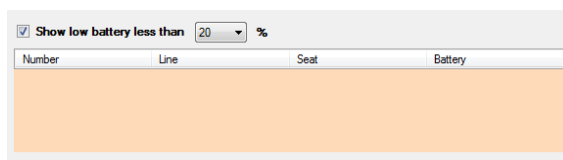


In all lists, the order can be changed via the Seat column. To do this, click on the arrow (ascending or descending).

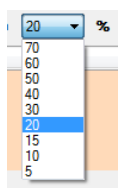
This does not change the order of the word request.



Battery indicator



If you work with DMic units in combination with DDoc stations, you have the possibility to keep an eye on the battery of the individual devices when they are low. To do this, place a check mark next to "Show low battery less than" in the lower area of the

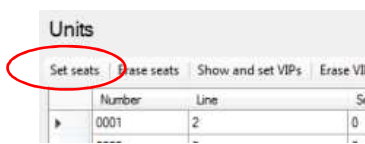


window. The function is now activated. Now enter the desired battery level via the drop-down list. If the battery falls below the selected capacity, the unit is automatically listed and the battery level is displayed - the battery can be replaced in good time.

Use the menu bar to make various settings:



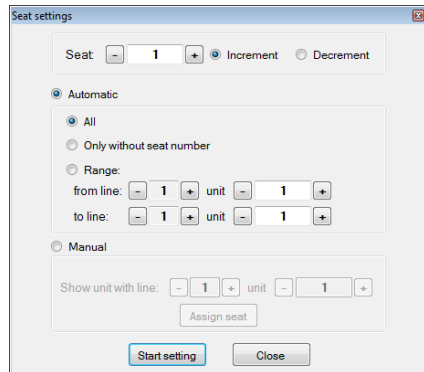
Set seats



Click on "Set seats" in the menu bar to assign seat numbers to the units of your conference system.



Seat numbers cannot be assigned while the conference is in progress. All microphones must be switched off for seat number assignment. Therefore, make sure that all microphones are switched off before starting the seat number assignment program.



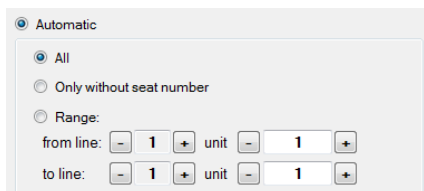
In the upper area of the window that opens, enter the start counter under "Seat" - i.e. with which seat number you want to start when assigning the numbers. Click on the number and use the keyboard to enter the desired number. Alternatively, increase/decrease the start counter by clicking the "+" / "-" button.

If seat numbers are already assigned, the next free seat number is automatically displayed.

Specify whether the numbering is to be performed in ascending or descending order. Select one of the two options ("Increment"/"Decrement") accordingly by clicking on it. The blue dot indicates the selected variant.

You have the option to have the seat number assignment performed automatically or to do it manually. Select the desired option by clicking on it. (The blue dot indicates the selected option).

Automatic



If you have the seat numbers assigned automatically, you have the following options.

All: a number is assigned to all units. Already numbered units are also taken into account and are given a new number - the previous number is overwritten.

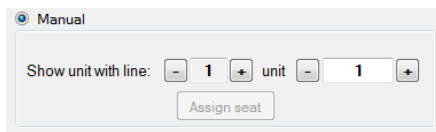
Only without seat number: Units without previous numbering are assigned a seat number. Already numbered units will be skipped.

Range: Here you define a certain range in which units should receive a seat number. Define the start range (from line) and the end range (to line) - you increase/decrease the line by clicking the "+" and "-" buttons. You can also set the desired unit by clicking the "+" and "-" buttons. Alternatively, you have the possibility to enter the unit via the computer keyboard.

Click the "Start setting" button at the bottom of the window - the system will automatically assign a seat number to each unit. To stop the seat number assignment, click on "Stop setting". (With "Close" you leave the window without having assigned seat numbers).

Instruction manual

Manual



To manually number the seats, activate the Manual section of the window by clicking on it. Now select the "Show unit with line" line to be numbered. Use "+" and "-" to increase or decrease the displayed line. Use the "Unit" field to select the corresponding unit. Click the "Start setting" button in the lower part of the window. For all numbered units, the microphone button is lit. For units without number, the microphone button is off. Press the microphone button to assign a seat number to the unit - the microphone button lights up. Press the microphone button again to cancel the numbering.



Alternatively, you have the option to number each unit manually via the system. Set the desired unit and click on "Assign seat". The unit is assigned a seat number. The microphone button of the unit lights up.

To stop the seat number assignment, click on "stop setting" in the lower part of the window.

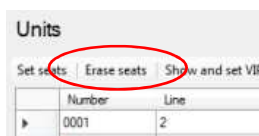


It is not possible to assign a seat number twice. In case of double allocation, the first allocation will be automatically cancelled.

Example: The unit 1/1 was assigned the seat number 10 - later this seat number is also assigned to the unit 2/8, then the assignment of the unit 1/1 expires. Microphone button and ring go out.

To close the window, click on "Close" in the lower area.

Erase seats



Click on "Erase seats" in the menu bar to erase the entire seat numbering. A window opens with a confirmation prompt.



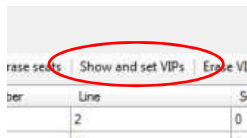
Confirm the operation to cancel the numbering. To keep the existing seat numbers, negate the query. The window will be closed without deleting the numbering.



All seat numbers are deleted via "Erase seats". If you only want to delete individual seat numbers, cancel them manually via the "Set seats" menu item (see 36 page).

Instruction manual

Show and set VIPs

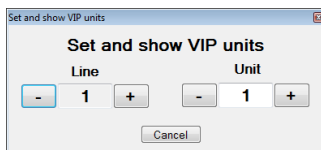


You have the option to give units a VIP status. This assigns certain priorities to the units depending on the settings. To appoint units to VIP status, click on "Show and Set VIPs" in the menu bar. A separate window will open.

If the function is activated, the microphone buttons light up on all VIP units. By pressing the microphone buttons, you can make additional units VIPs or withdraw the VIP status by pressing them (again).

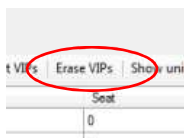


Alternatively, you can also set the VIP status via the VIP column in the main window - see page 33.



To search for specific units in a system or to get a better overview of the existing units and their position, you can set a marker in the "Set and show VIP units" window. To do this, enter the desired line and unit - the corresponding microphone will blink. Alternatively, you can use the "+" and "-" buttons to move through the units - the respective microphones flash, and the exact position within the system and in the room can be read off.

Erase VIPs

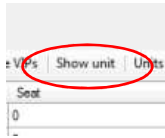


Click on "Erase VIPs" to undo the naming of all VIP units. A window opens with a security question. Confirm the question to perform the operation. If you negate the question, all units keep their VIP status.

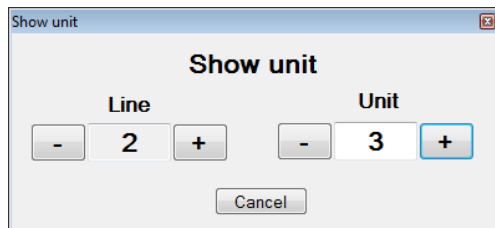


Use "Erase VIPs" to remove the status of all VIP units. To edit individual units, use the "Show and set VIPs" menu item or the manual setting in the VIP column in the "seats" main window

Show unit



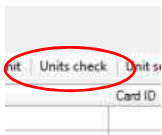
The "Show unit" function helps you to keep track of a large number of units and to filter out special units. To do this, click on the function button in the menu bar. A separate window opens.



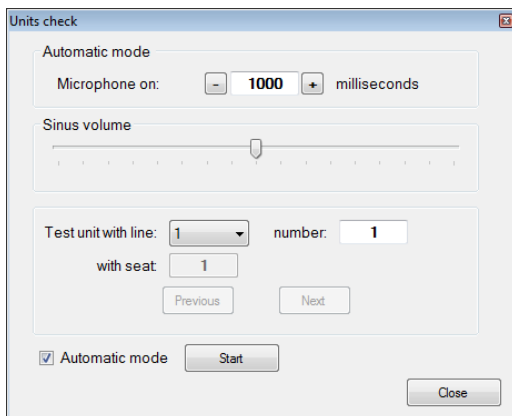
Enter the desired position of the unit (line and position in the chain) - microphone button and ring of the desired unit flash. You enter the line "Line" via the buttons "+" and "-". "Unit" you control also by the buttons "+" and "-", alternatively you click in the field and enter the position of the unit by the keyboard of your computer.

With "Cancel" you close the window again.

Units check



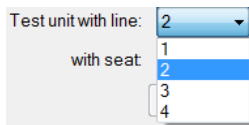
Use "Units check" to test the individual units or their loudspeakers and microphones. A signal is sent to the loudspeakers of an individual desk and recorded again via microphone. Click on the "Units check" button in the menu bar; the following window opens.



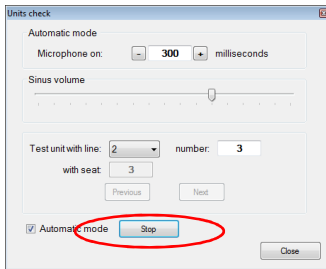
In the upper part of the window, enter how long the test tone should be played in milliseconds at "Microphone on". Use "+" to increase the duration - "-" to decrease it (in steps of 100). Alternatively, click in the field and enter the desired duration manually using the computer keyboard. (The setting "Microphone on" is only necessary for the automatic test mode).

Use the "Sine volume" slider to adjust the volume of the test tone. To do this, click and hold the level and move it along the scale to the desired position. Alternatively, click on the scale with the mouse - the level moves step by step in the direction of the clicked position.

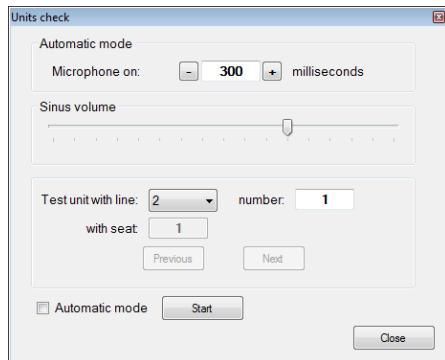
Instruction manual



In the middle field, specify with which unit you want to start the Automatic test. Use the drop-down list to specify the number of line 1-4. Then click in the "Number" field and enter the position of the unit via the keyboard. The assigned seat number will automatically appear in the "with seat" window. Now click on "Start" - the program starts testing the individual units. The test tone will sound - additionally the microphone buttons of the units will light up. In the window, the numbers at "number" and "with seat" change according to the currently tested unit. If all units of the chain have been tested, the run starts again.



Click on "Stop" to finish the process.

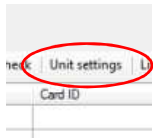


To test individual units manually, remove the checkmark from "Automatic mode". Now set the unit to be tested and click on "start". The test tone sounds (continuously). To stop the test, click on "stop". With the start of the manual test, the functions "Previous" and "next" are activated, with which you can click through the units of the line. With Previous you always get to the previous unit, with next to the following one.

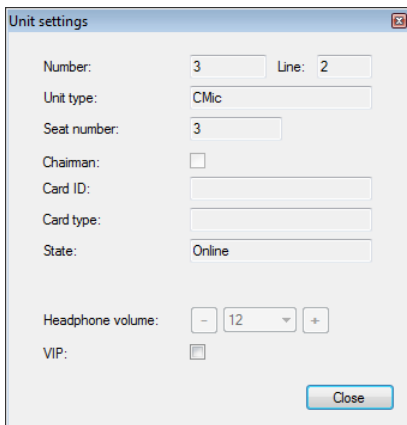


Close" closes the window.

Unit settings



You can obtain information on individual units via "Unit setting". To do this, click on the desired unit in the overview in the main window and then on "Unit setting" in the menu bar. The following window opens.



Number: Indicates the fourth position of the unit in the chain.

Line: Indicates in which line the unit is located

Unit type: Shows what type of unit it is.

Seat number: the assigned seat number is listed

Chairman: If a check mark is set, it is a chairman unit with special rights. If no check mark is set, it is a normal unit.

Card ID: The card identification number is displayed.

Card type: The card type is shown.

Status: Is the unit online or offline

Headphone volume: The set headphone volume of the unit is displayed here. This can be set via the drop-down list or the "+" and "-" buttons.

VIP: If a check mark is set, it is a VIP unit with special rights. If no checkmark is set, it is a normal delegate unit. You have the possibility to give or withdraw a VIP status to the unit by checking the box.

Close" closes the window.

Lift



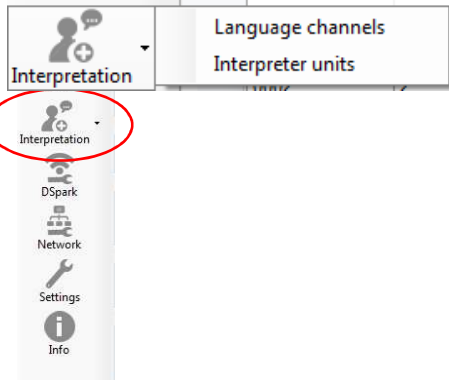
"Lift" is used to operate microphone units with a retractable microphone. Click the "lift" button - the window that opens allows you to move the retractable microphone up or down.

Instruction manual

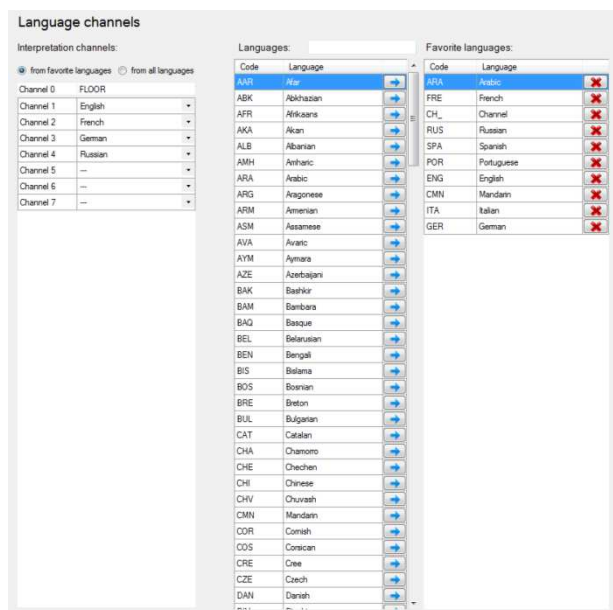
Interpretation



The "Interpretation" menu gives you information about languages, channels and interpreters. Click on "Interpretation" in the menu bar to enter the menu. A drop-down list opens. Select one of the two options "Language channels" or "Interpreter Units" here.



Language channels

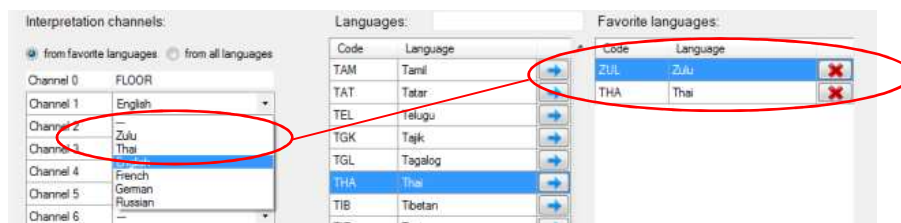


Under Language Channels you specify the languages into which you want to translate.

Above the first column on the left, specify whether the translated languages should be selected from a list of favorites or from all (possible) languages. The blue dot indicates the selected option. Now open the drop-down list (all languages or only favorites, depending on the setting). Select the language to be interpreted by clicking on it.



Channel 0 is always set to "Floor" and cannot be changed.



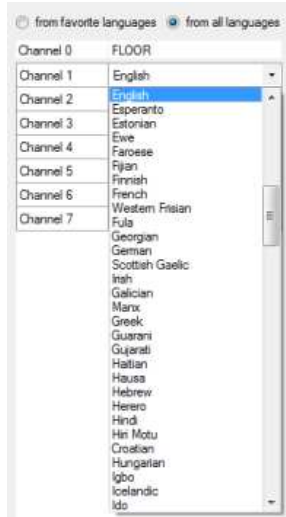
left column.

If you have selected "from favourite languages", your selected favorites will be displayed in the drop-down list in the

Instruction manual



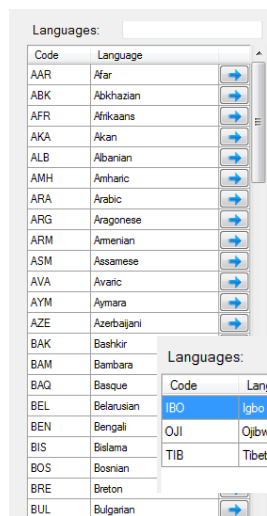
English, French, German and Russian are always displayed by default.



If "from all languages" is set, all possible languages will be displayed in the drop-down list.



The languages are sorted alphabetically according to the ISO country abbreviations. A list of all possible languages and their abbreviations can be found in the appendix (page 54) of this manual.



Use the middle column to determine your favorites list. To do this, click on the blue arrow of the desired language - the language will automatically be added to the list of favorites. You can use the slider on the side to go through the languages and select. Alternatively, you can use the search function above the column. Enter the corresponding language/language abbreviation (a few letters are enough) - the search will be reduced to the possible languages.

Example

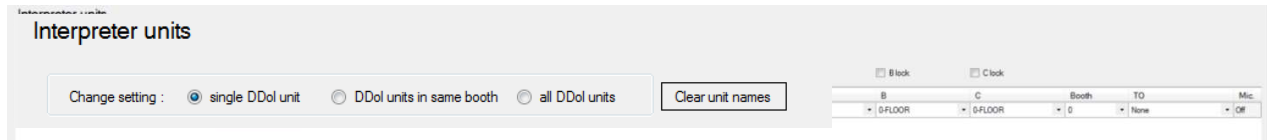


The selected languages are listed in the Favorites list (right column). Click the "X" to remove the language from the Favorites list.



In the factory setting, the following languages are marked as favorites:
English (ENG); French (FRE); Spanish (SPA); Russian (RUS); Mandarin (CMN); Arabic (ARA);
German (GER); Italian (ITA) and Portuguese (POR).

Interpretation Units



In the "Interpretation Units" menu, you make settings for the interpreter consoles.

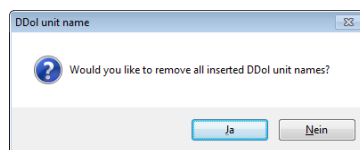
In the upper line you specify for which interpreter consoles the settings are intended:

Single DDol unit: all settings are taken from one (selected) unit.

DDol units in same booth: the units within a booth take over the settings.

All DDol units: all units of the system adopt the settings.

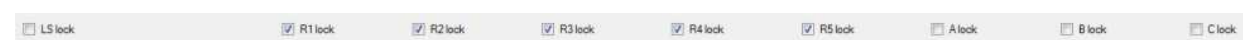
Clear units names: You have the possibility to give names to single DDol units (See page 42 of this manual) - this can be especially helpful with numerous DDols to get a better overview. With the button "Clear units names" you can delete the names again. Click the button, a security question appears, which you have to answer in the affirmative to finish the process.



Channel lock



You can protect the input and output channels (R1-R5 and A-C) of the interpreter consoles against adjustment via your DIGIMIC control unit and the DCen ConfigTool. To do this, click on the desired channel. A check mark symbolizes the locked state.

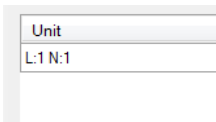


With LS lock you lock the loudspeaker of the corresponding unit(s) - this is especially useful when there are several interpreters within one booth, as other cases may cause interference.

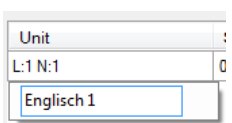
The table in the main window displays the various information about each interpreter console.

Unit	Speaker	Original	R1	R2	R3	R4	R5	A	B	C	Booth	TO	Mic.
L:1 N:1	1 ENG	ORG	3 GER	4-RUS	0-FLOOR	0-FLOOR	0-FLOOR	1-ENG	0-FLOOR	0-FLOOR	0	None	OFF

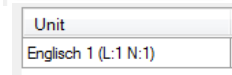
Unit



Under "Unit" you will see the line as well as the placement of the DDol. In addition, you have the option of giving the respective DDol unit a name.



Click with the right mouse button in the "Unit" field - a title block will open. Enter the desired name here. Then confirm your input with "Enter".



The name is taken over - line and number are still displayed.

Instruction manual

Speaker

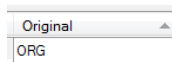


Use "Speaker" to set the DDol's built-in speaker to the desired language channel.



The drop-down list displays the languages that you have specified as languages to be interpreted under "language Channel" (see page 41). Select one of the languages by clicking on it.

Original



Under Original you will always see "ORG" - this setting cannot be changed.

R1 to R5

R1	R2	R3	R4	R5
3-GER	4-RUS	0-FLOOR	0-FLOOR	0-FLOOR

Use the input channels R1 to R5 to set the languages from which translation is to be performed. Select the corresponding language/channel via the drop-down list - the corresponding field lights up green. In addition to the selected languages, the interpreter can also access the original sound (floor).



Each DDol can have different languages on the inputs - so it is possible to transmit a total of up to 32 language channels (including original sound) in parallel.

A to C

A	B	C
1-ENG	0-FLOOR	0-FLOOR

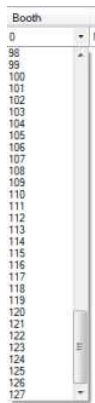
Via the output channels A to C you define in which language the corresponding interpreter translates. Open the drop-down list and select the desired language by clicking on it.



The original sound (floor) can be selected within the ConfigTool - but selecting the channel at the interpreter console is not possible. This prevents interpreters from transmitting on the original channel.

Instruction manual

Booth



Each interpreter console is assigned to a booth. Up to 127 booths are possible. Assigning the consoles to the booths is important for the nickname mode.

To assign the consoles, open the drop-down list and select the desired booth number by clicking on it. Use the level or the wheel of your mouse to scroll through the possible booth numbers.



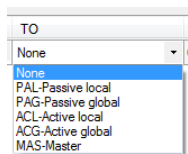
Only one DDol microphone can be switched on per booth. The "Speaker" setting is always the same within a booth.

Takeover Mode



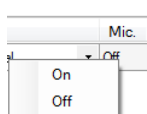
With TakeOver (TO) you set the takeover mode of the interpreter consoles. Click on the arrow key under "TO" to open the drop-down list of the different modes. By clicking on the desired mode you set it.

The following modes are possible:



- | | |
|----------------------|---|
| None | It is not possible for this DDol to take over a channel already occupied by another DDol. |
| PAL - Passive local | This DDol can register to take over a channel that is already occupied by another DDol in the same booth. If the DDol releases the channel, the waiting DDol automatically switches to the channel. |
| PAG - Passive Global | As for PAL, but not limited to one booth |
| ACL - Active local | This DDol can take away an occupied channel from another DDol in the same booth (except for a takeover master). |
| ACG - Active global | This DDol can take away an occupied channel from another DDol (except Takeover Master). |
| MAS - Master | A takeover master can take away a channel from another DDol, but is itself protected against takeaways by other DDols. |

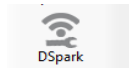
Mic.



Via the column "Mic. " column you have the option to switch the interpreter console microphones on or off from your seat. To do this, click on the "On" or "Off" field. A small window with the two options will open. Click the desired option - the unit's microphone will turn on or off.

Instruction manual

DSpark



In combination with the DSpark control panel, wireless use of the DIGIMIC system is possible. Via the DMic/DChair delegate units and the DDoc docking station, all audio signals are transmitted via radio.



The use of a wireless DIGIMIC system is only possible outside the EU!



The use of a DSpark is only possible with older DCen models, from model DCen MkII this menu item is omitted

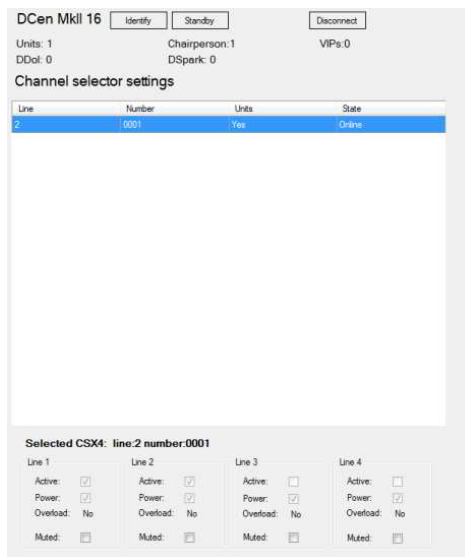


For the operation of the DSpark via the DCen ConfigTool, please read the separate operating instructions.

CSX4



The DCen ConfigTool can also be used to control CSX4 control panels. To do this, click on the "CSX4" button in the left menu bar.



The upper part of the Channel selector menu shows you the CSX4 control panels connected to your DCs.

Line: it is listed to which of the 4 outputs the CSX4 control panel is attached.

Number: at which position in the line is the CSX4

Units: If channel selectors are connected



No number of units is displayed, only "Yes" for there are channel selectors present and "No" for there are no channel selectors connected.

State: The CSX4 control panel is active (Online) / is not active (Offline)



In the lower part of the Channel selector menu you will see information about the 4 outputs of the CSX4.

Active: a check mark symbolizes the activated check mark (empty box means line is not active (no channel selectors connected)).

Power: On the line there is power supply

Overload: The output current of the respective chain is measured - if the output current is within a reasonable range, this is indicated with "No" (there is no overload). If the output current is too high, this is indicated with a Yes.



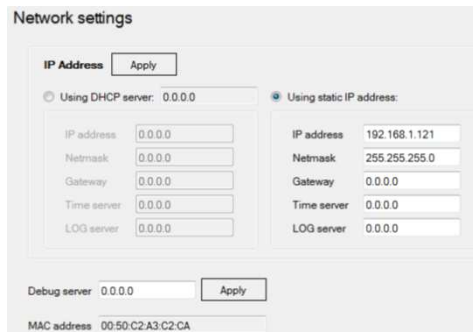
It is possible to extend channel selector chains by intermediate DExt.



The items "Active", "Power" and "Overload" are for information only and cannot be changed via the software.

Muted: Click the box to mute the line. A check mark symbolizes the muted state.

Network



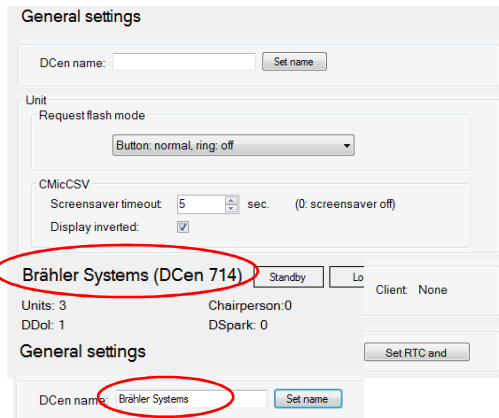
The Network section displays information about your network.

You can also choose whether you are assigned an IP address within the system via a DHCP server or whether you use a static IP address. To do this, click in the corresponding field (the blue dot shows the selected option).

If your IP address is assigned via the DHCP server of your network, all information from the IP address, gateway to LOG server will be listed automatically. If you have selected static, you must enter the required information manually.

Use the Apply button to confirm your entries and they will be accepted by the DCen.

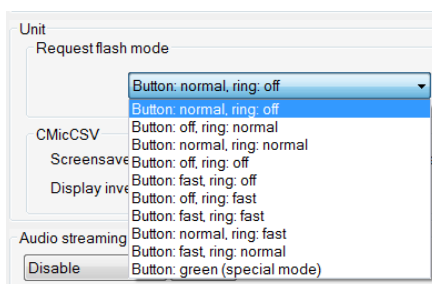
Settings



Under Settings you make general settings.

DCen name: enter a name for your DCen in the free field. (This helps to better distinguish the individual DCens in a larger system). Then click on the "set name" button - the name will be applied.

Unit

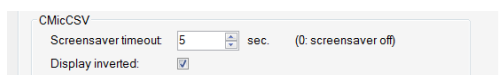


Request flash mode

The Request flash mode is used to define the light signals of the microphone button and the microphone ring during a word message request. You can have the button and the ring flash normally, flash faster and/or switch them off. Button and ring can have different light signals.

In addition to the normal red flashing, there is also a special mode - here the microphone button lights up green.

CMicCSV



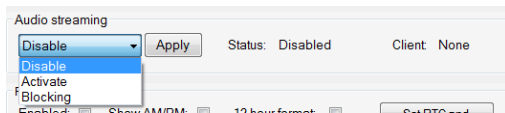
Use CMicCSV to make settings for your CMics. Set at "Screensaver timeout" when the screensaver of your CMics should be activated. Increase/decrease the

number of seconds by clicking the arrow keys (up, the number increases; down, the number decreases). Alternatively, you can click in the field and enter the desired number using your computer's keyboard. If you have entered 0, the screen saver is switched off.

Display inverted: To protect the display of your CMic units, the display "white on black" is recommended. Newer units use this setting automatically. A check mark is set under "Display inverted". To change the display to "black on white", remove the check mark (this setting is not recommended). Older CMic units default to "black on white", change this setting by placing a check mark under "Display inverted".

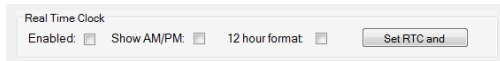
Audio streaming

Instruction manual



This function is used to stream audio to an app for iPhone or iPad and is no longer supported.

Real Time Clock



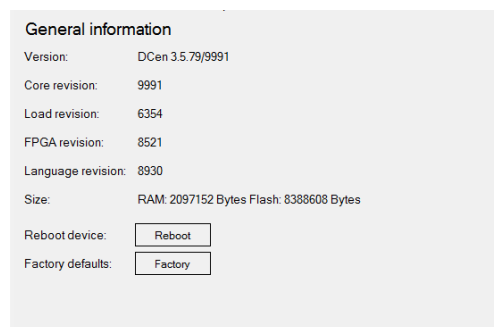
This function is exclusively for newer DCen and DDol devices. About Put a check mark at "Enable" - the time will

be shown on the display of the DDol.



Use "Program" to set RTC so that the time is automatically displayed on the DDol when the program is started. See also page 9 of this manual.

Info



Go to "Info" in the menu bar You will get general information about your DCen.

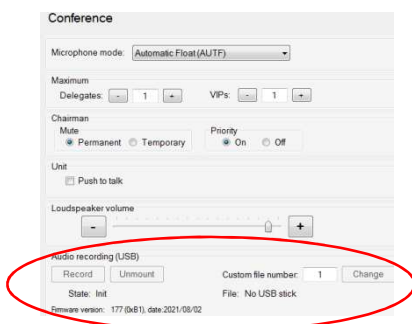
You also have the option of restarting your DCs. This may be necessary, for example, if you connect new devices (DSpark, CSX4, etc.).

Use the "Factory" button to reset all settings to factory defaults. (You will find an overview of the factory settings on page 52 of this manual).

DCen mini

With the DCen ConfigTool, you not only set the DCen central unit - the DCen mini central unit can also be controlled via the software. In the basic settings, the ConfigTool can be operated in the same way as described under Menu (from page 16 of this manual). On the next times few differences to the DCen are described.

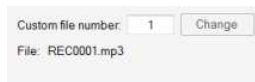
Conference



Under Conference the item Audio recording (USB) is added. This is used to record conferences.

To do this, first connect a USB stick/external hard drive to the DCen mini (USB interface).

Instruction manual



The DCen mini stores the recorded audio files consecutively numbered. You define the start number under "Custom file number". Confirm/change the start number with "Change". The DCen mini saves the last number assigned and automatically continues numbering with the next free number. The file name is displayed under "File".



The DCen mini automatically saves the audio files according to the start number entered. Existing files with the same number are overwritten. There is no feedback/warning. Therefore, pay close attention to the entry of your start number.



To start recording/recording, click on "Record".

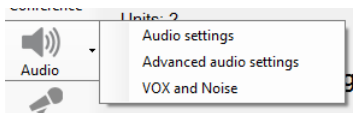


The status changes to Record. Click the "Stop" button to end the recording/recording.

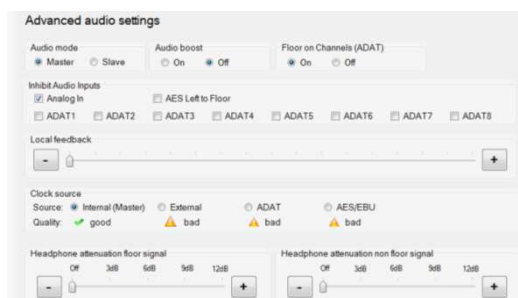


Click on "Unmount" to eject the USB stick/external hard disk. The status changes to Unmount - the device can be removed.

Audio



Under Audio, the options "Audio settings" "Advanced audio settings" and "Vox and Noise" are available. The "Audio Matrix" option is omitted.



Under "Advanced audio setting", the option to set "Dante" as the source is also omitted under "Clock source".

Appendix

Default factory settings

The default factory settings of the DIGIMIC DCs are as follows:

Conference parameters		
Priority	OFF (Off)	
permanently or temporarily "mute all	PERMANENT	
Max. Number of active DElegates (subscriber microphones)	DEL3 (3 participants)	
Max. Number of active VIP microphones	VIP3	
Volume and conference mode		
LS volume	50%	
Conference operation AUT, AUTN, AUTF, MAN	AUT	
AUTomatic conference mode	AUT	
INTernal or EXTernal audio source	INTERNAL	
Network menu		
Static and dynamic address assignment (address assignment static or dynamic)	DYNAMIC	
TCP/IP address	Automatic	
Network Mask	Automatic	
Default gateway	Automatic	
SysLog Server	Automatic	
DHCP server	Automatic	
MAC Address	Fixed (fixed, individual for each DCen)	
Ethernet line status	Automatic entry	
Audio menu		
Audio routing (audio distribution)	DEFAULT	
Audio routing		
Default (standard)	Fix (not editable)	
Chairman (Chairman)	Fix (not editable)	
Individual Preset 1-8 (individual settings no. 1-8)	no entry (editable)	

Troubleshooting

Error description	Possible cause of error	Possible solution
After switching on the DCen (Power on), the system remains without reaction. (The green LED on the power switch does not light up).	<p>The power cord is not or not properly connected to the corresponding power jack.</p> <p>The power cable is defective.</p> <p>The power switch is not in its correct position.</p>	<p>Insert the mains cable into the mains connection socket or check the connection by pressing it in.</p> <p>Replace the power cord with a new one.</p> <p>Set the power switch to the "Power on" position.</p>
One or more of the yellow AF indicators of the DCEn control panel are not lit (L1...L4).	Probably no audio signal is present (no microphone active).	<p>Check whether the speaker has activated the microphone (illuminated ring on the microphone is lit).</p> <p>Check the wiring of the units and the microphones.</p>
One or more of the green voltage indicators (48 VDC) of the control panel DCs are not lit (L1...L4).	<p>One or more delegate units cause a short circuit.</p> <p>One or more lines of the console chains are out of order.</p> <p>The cable between the units and the DCen is not connected correctly.</p>	<p>Check the corresponding line for faults in the wiring.</p> <p>Check the units. Remove or replace the defective unit in the corresponding line.</p> <p>Check the wiring.</p> <p>Do not try to eliminate the short circuit by switching the DCen control panel off and on.</p>

List of ISO 639-2 language codes

Abkhazian	ABK	Hungarian	HUN	Portuguese	POR
Afar	AAR	Icelandic	ICE	Punjabi	PAN
Afrikaans	AFR	Ido	IDO	Quechua	QUE
Akan	AKA	Igbo	IBO	Romanian	RUM
Albanian	ALB	Indonesian	IND	Romansh	ROH
Amharic	AMH	Interlingua	INA	Russian	RUS
Arabic	ARA	Inuktitut	IKU	Samoan	SMO
Aragonese	ARG	Inupiaq	IPK	Sango	SAG
Armenian	ARM	Irish	GLE	Sanskrit	SAN
Assamese	ASM	Italian	ITA	Sardinian	SRD
Avaric	AVA	Japanese	JPN	Scottish Gaelic	GLA
Aymara	AYM	Javanese	JAV	Serbian	SRP
Azerbaijani	AZE	Kannada	KAN	Shona	SNA
Bambara	BAM	Kanuri	KAU	Sichuan Yi	III
Bashkir	BAK	Kashmiri	KAS	Sindhi	SND
Basque	BAQ	Kazakh	KAZ	Sinhalese	SIN
Belarusian	BEL	Kikuyu	KIK	Slovak	SLO
Bengali	BEN	Kinyarwanda	KIN	Slovenian	SLV
Bislama	BIS	Kirghiz	KIR	Somali	SOM
Bosnian	BOS	Kirundi	RUN	South Ndebele	NBL
Breton	BRE	Klingon	TLH	Southern Sotho	SOT
Bulgarian	BUL	Komi	COM	Spanish	SPA
Burmese	MYA	Congo	CON	Sundanese	SUN
Cambodian	KHM	Korean	KOR	Swahili	SWA
Catalan	CAT	Kurdish	KUR	Swati	SSW
Chamorro	CHA	Kwanyama	KUA	Swedish	SWE
Chechen	CHE	Laotian	LAO	Tagalog	TGL
Chichewa	NYA	Latin	LAT	Tahitian	TAH
Chuvash	CHV	Latvian	LAV	Tajik	TGK
Cornish	COR	Limburgish	LIM	Tamil	TAM
Corsican	COS	Lingala	LIN	Tatar	TAT
Cree	CRE	Lithuanian	LIT	Telugu	TEL
Croatian	HRV	Luba-Katanga	LUB	Thai	THA
Czech	CZE	Luxembourgish	LTZ	Tibetan	TIB
Danish	DAN	Macedonian	MAC	Tigrinya	TIR
Divehi	DIV	Malagasy	MLG	Tonga	TON
Dutch	DUT	Malay	MAY	Tsonga	TSO
Dzongkha	DZO	Malayalam	MAL	Tswana	TSN
English	ENG	Maltese	MLT	Turkish	TUR
Esperanto	EPO	Mandarin	CMN	Turkmen	TUK
Estonian	EST	Manx	GLV	Twi	TWI
Ewe	EWE	Maori	MRI	Uighur	UIG
Faroese	FAO	Marathi	MAR	Ukrainian	UKR
Fijian	FIJ	Marshallese	MAH	Urdu	URD
Finnish	FIN	Mongolian	MON	Uzbek	UZB
French	FRE	Nauru	NAU	Venda	VEN
Fula	FUL	Navajo	NAV	Video	VID
Galician	GLG	Ndonga	NDO	Vietnamese	VIE
Ganda	LUG	Nepalese	NEP	Walloon	WLN
Georgian	GEO	Northern Ndebele	NDE	Welsh	WEL
German	GER	Northern Sami	SME	Western Frisian	FRY
Greek	GRE	Norwegian	NOR	Wolof	WOL
Greenlandic	KAL	Occitan	OCI	Wu Chinese	WUU
Guaraní	GRN	Ojibwa	OJI	Xhosa	XHO
Gujarati	GUJ	Oriya	ORI	Yiddish	YID
Haitian	HAT	Oromo	ORM	Yoruba	YOR
Hausa	HAU	Ossetian	OSS	Yue Chinese	YUE
Hebrew	HEB	Other	OTH	Zhuang	ZHA
Herero	HER	Pashto	PUS	Zulu	ZUL
Hindi	HIN	Persian	PER		
Hiri Motu	HMO	Polish	POL		

If you have any questions about these operating instructions, please contact:

BRÄHLER Systems GmbH
Auf der Alten Burg 6
53639 Königswinter

T +49 2244 8414-4

sales@braehler-systems.com
www.braehler-systems.com

Note: Changes or modifications to the equipment not expressly approved by Brähler Systems could void the user's authority to operate this equipment.

©2022 Brähler Systems GmbH, Königswinter, Germany

All rights reserved, in particular (also in extracts) those of translation, reprinting, reproduction by copying or similar processes.

Brähler Systems reserves the right to make technical changes without notice.

All trademarks mentioned are trademarks or registered trademarks of their respective owners and are recognized as protected.